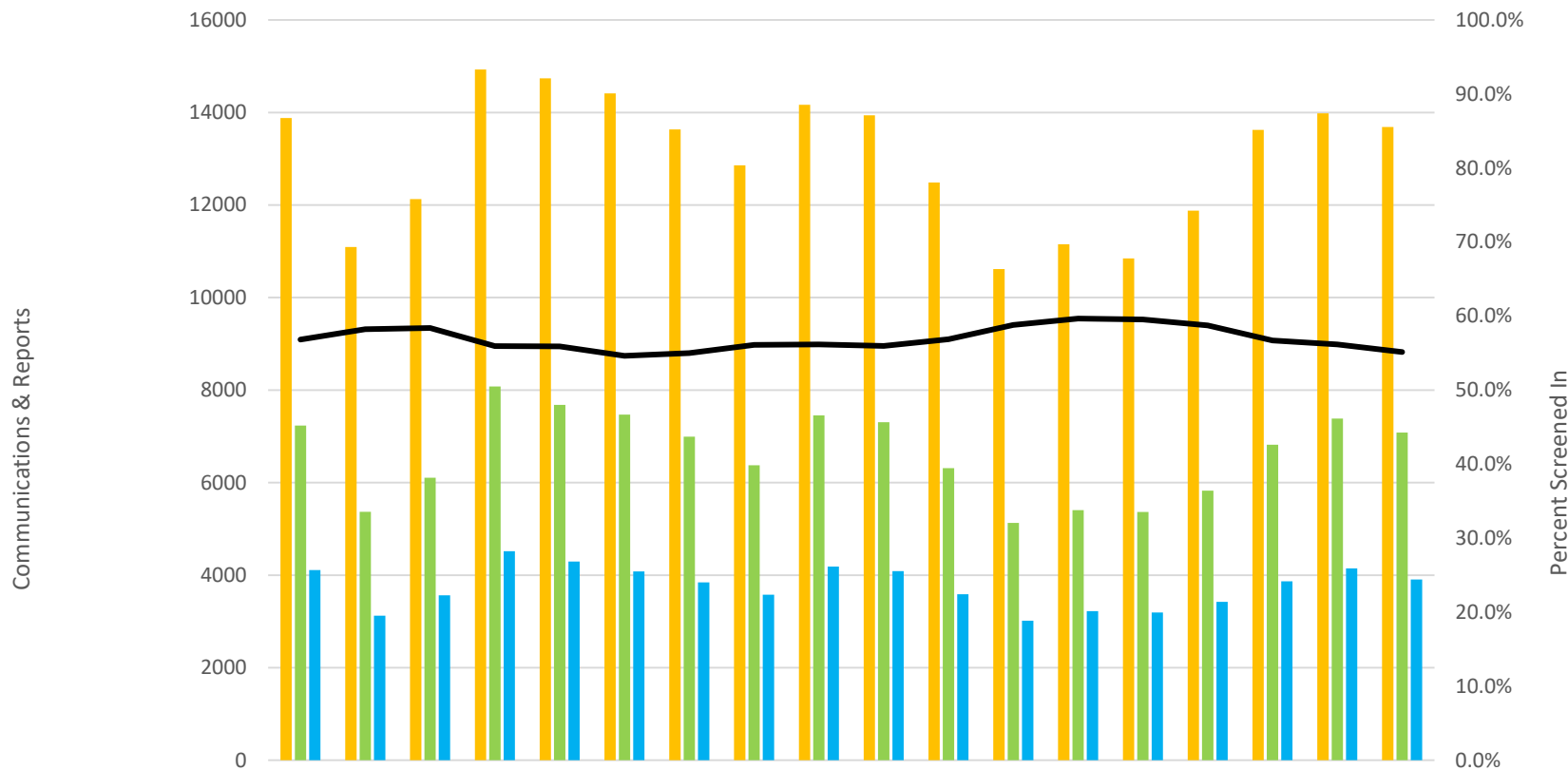


Department of Child Safety

Data charts as of week beginning 11.09.2020



Communications & Reports to the Hotline



	May -19	Jun-19	Jul-19	Aug-19	Sep-19	Oct-19	Nov-19	Dec-19	Jan-20	Feb-20	Mar-20	Apr-20	May-20	Jun-20	Jul-20	Aug-20	Sep-20	Oct-20
Communications	13882	11094	12129	14928	14740	14414	13634	12859	14168	13939	12485	10615	11151	10847	11878	13623	13981	13686
Hotline Communications	7232	5368	6106	8078	7679	7469	6992	6376	7452	7305	6312	5128	5404	5365	5827	6818	7383	7082
Reports	4109	3125	3565	4519	4293	4080	3845	3577	4186	4088	3589	3015	3224	3194	3423	3866	4147	3905
Screen In %	56.8%	58.2%	58.4%	55.9%	55.9%	54.6%	55.0%	56.1%	56.2%	56.0%	56.9%	58.8%	59.7%	59.5%	58.7%	56.7%	56.2%	55.1%



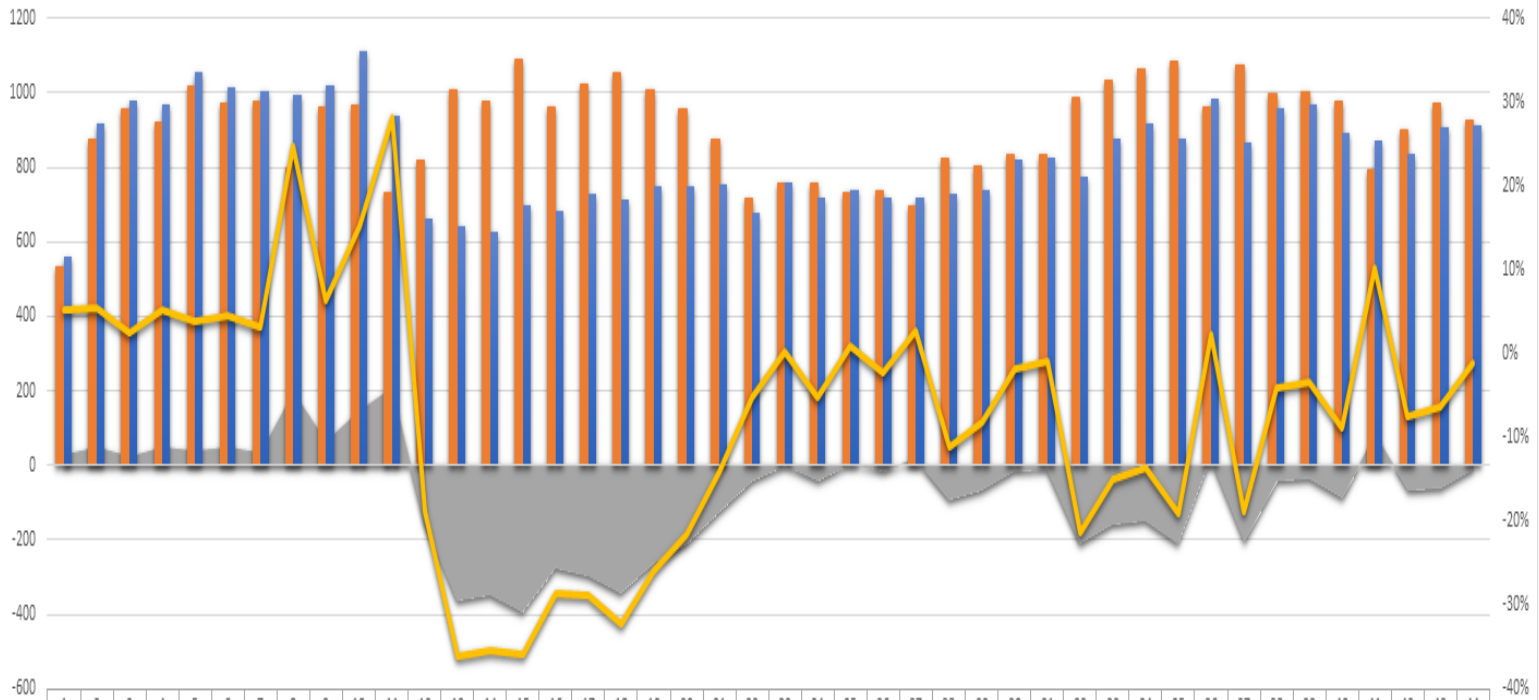
NOTE: Communications, Hotline Communications, and Reports include calls/reports that are no jurisdiction reports.

Screen In % shows reports as a percentage of total Hotline Communications.

Data Source: DCS Tableau Dashboard, Communications Received by Weekday and Hour Reports, 11.9.2020

All Reports in CHILDS regardless of source type:

Weekly Reports - All Source Types (2019 vs 2020)



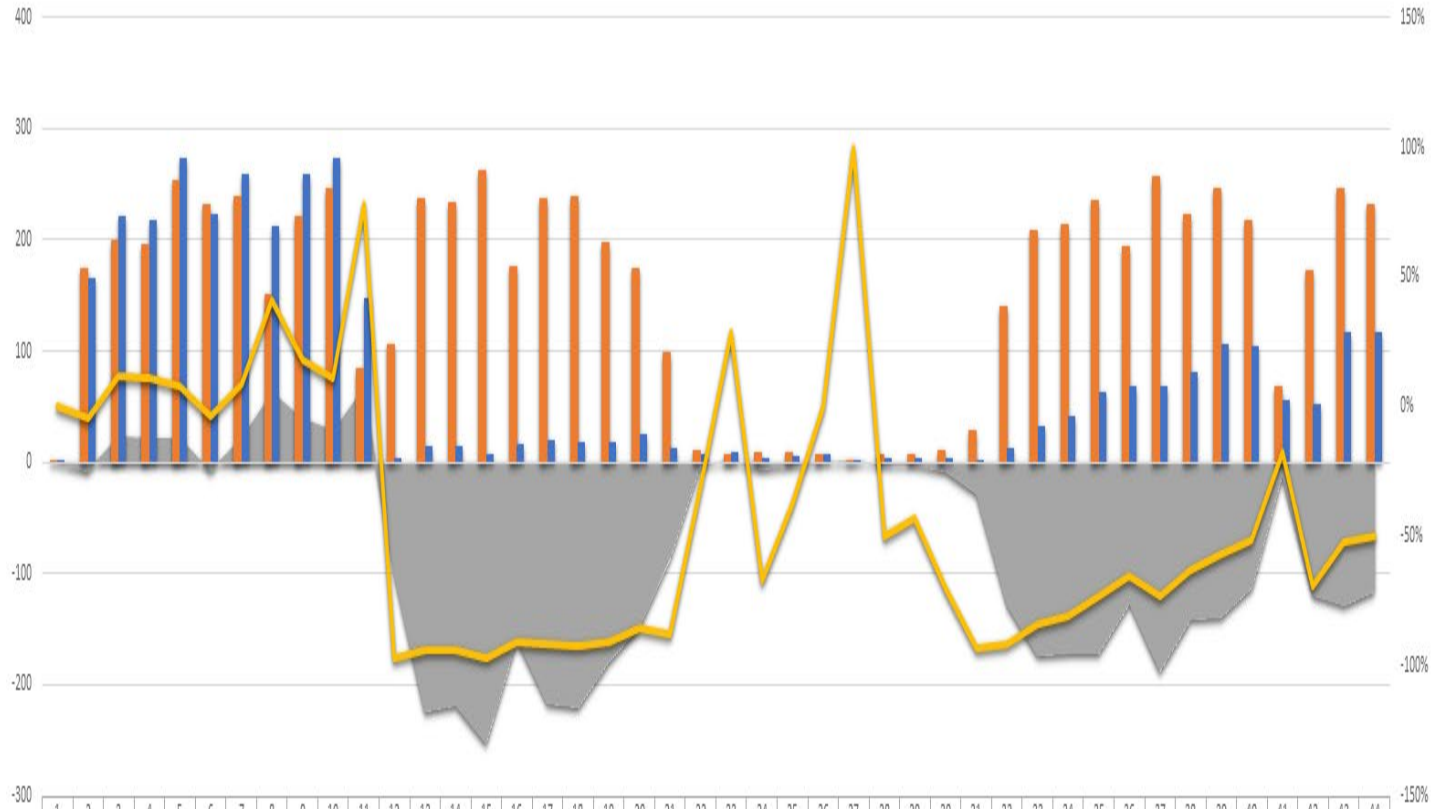
■ All Source Var.	28	47	23	48	39	45	31	197	61	146	206	-154	-362	-346	-391	-274	-294	-339	-260	-207	-123	-38	1	-39	6	-16	19	-92	-65	-15	-7	-210	-156	-146	-206	22	-202	-40	-34	-86	81	-67	-61	-10
■ 2019-All Sources	532	873	955	920	1016	972	974	797	960	965	733	816	1005	975	1089	959	1022	1054	1009	957	876	717	759	756	733	735	698	821	804	835	835	986	1035	1065	1084	963	1071	999	1003	977	791	901	971	924
■ 2020-All Sources	560	920	978	968	1,055	1,017	1,005	994	1,021	1,111	939	662	643	629	698	685	728	715	749	750	753	679	760	717	739	719	717	729	739	820	828	776	879	919	878	985	869	959	969	891	872	834	910	914
■ % All Source Var.	5%	5%	2%	5%	4%	5%	3%	25%	6%	15%	28%	-19%	-36%	-35%	-36%	-29%	-29%	-32%	-26%	-22%	-14%	-5%	0%	-5%	1%	-2%	3%	-11%	-8%	-2%	-1%	-21%	-15%	-14%	-19%	2%	-19%	-4%	-3%	-9%	10%	-7%	-6%	-1%

■ All Source Var. ■ 2019-All Sources ■ 2020-All Sources ■ % All Source Var.



Reports in CHILDS coded as School Setting source type:

Weekly Reports - School Setting Source Type (2019 vs. 2020)

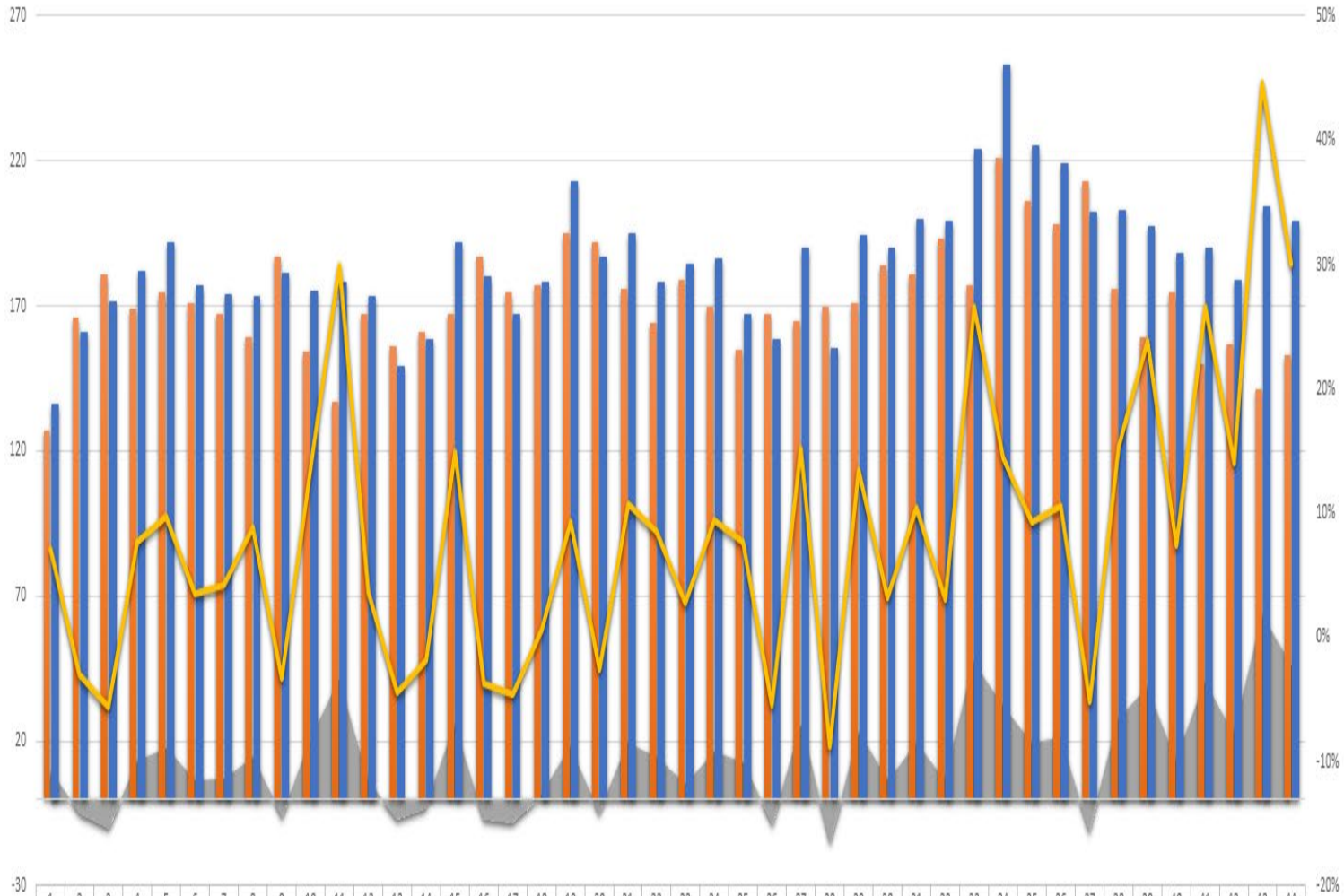


	1	2	3	4	5	6	7	8	9	10	11	12	13	14	15	16	17	18	19	20	21	22	23	24	25	26	27	28	29	30	31	32	33	34	35	36	37	38	39	40	41	42	43	44
School Var.	0	-8	23	21	21	-8	21	62	39	28	65	-102	-223	-218	-253	-159	-216	-220	-179	-148	-86	-3	2	-6	-3	0	1	-3	-3	-7	-27	-128	-174	-172	-171	-126	-187	-141	-139	-112	-12	-119	-129	-115
2019-School	2	173	198	196	253	231	238	151	221	246	83	105	237	233	261	176	236	238	197	173	98	10	7	9	8	7	1	6	7	10	29	140	207	214	235	194	256	223	245	217	68	172	246	232
2020-School	2	165	221	217	274	223	259	213	260	274	148	3	14	15	8	17	20	18	18	25	12	7	9	3	5	7	2	3	4	3	2	12	33	42	64	68	69	82	106	105	56	53	117	117
% School Var.	0%	-5%	12%	11%	8%	-3%	9%	41%	18%	11%	78%	-97%	-94%	-94%	-97%	-90%	-92%	-92%	-91%	-86%	-88%	-30%	29%	-67%	-38%	0%	100%	-50%	-43%	-70%	-93%	-91%	-84%	-80%	-73%	-65%	-73%	-63%	-57%	-52%	-18%	-69%	-52%	-50%

School Var. 2019-School 2020-School % School Var.



Weekly Reports - Law Enforcement Source Type (2019 vs. 2020)

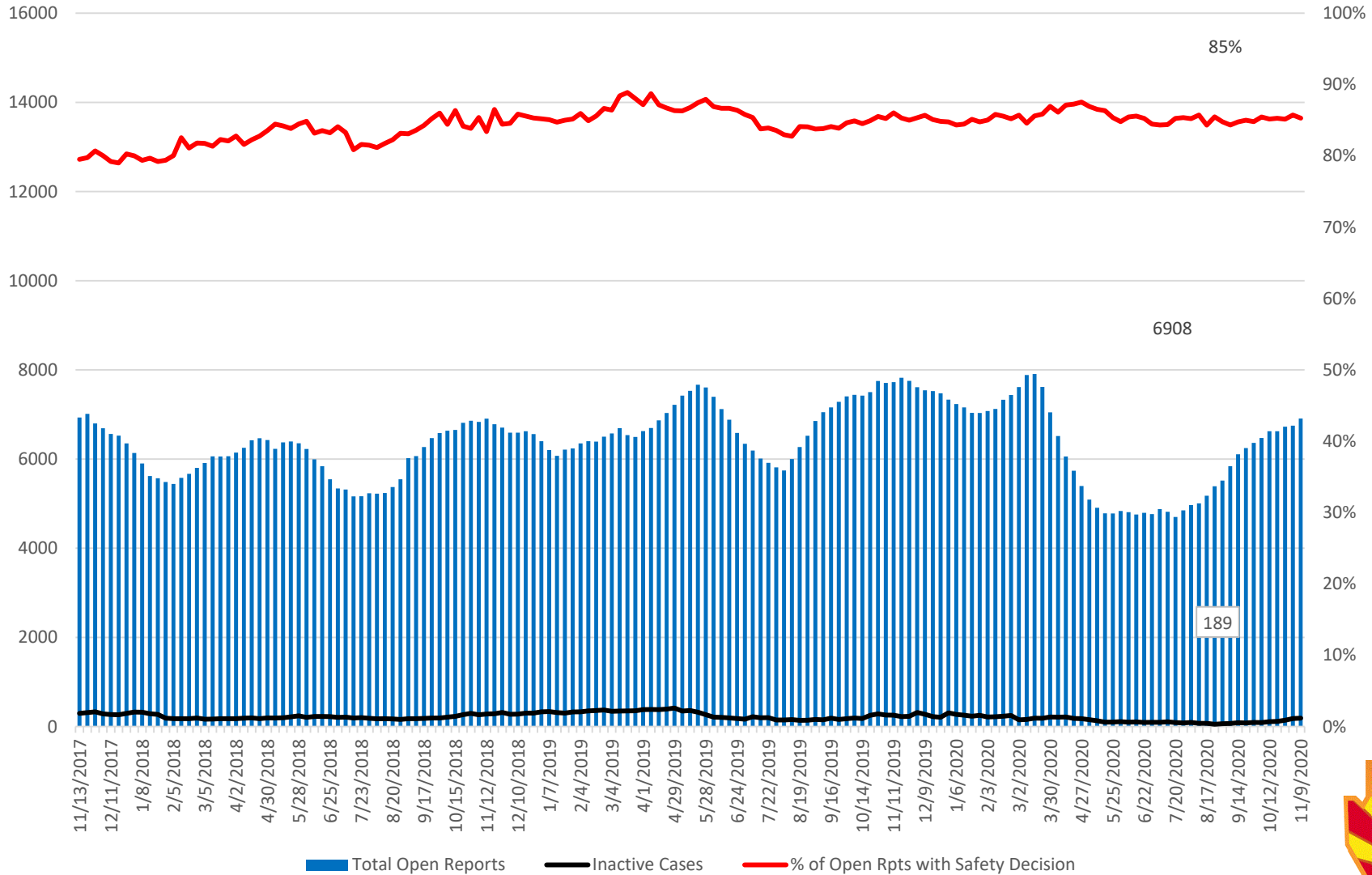


	1	2	3	4	5	6	7	8	9	10	11	12	13	14	15	16	17	18	19	20	21	22	23	24	25	26	27	28	29	30	31	32	33	34	35	36	37	38	39	40	41	42	43	44
Law Var.	9	-5	-10	13	17	6	7	14	-6	21	41	6	-7	-3	25	-7	-8	1	18	-5	19	14	5	16	12	-9	25	-15	23	6	19	6	47	32	19	21	-11	27	38	13	40	22	63	46
2019-Law	127	166	181	169	175	171	167	159	187	154	137	167	156	161	167	187	175	177	195	192	176	164	179	170	155	167	165	170	171	184	181	193	177	221	206	198	213	176	159	175	150	157	141	153
2020-Law	136	161	171	182	192	177	174	173	181	175	178	173	149	158	192	180	167	178	213	187	195	178	184	186	167	158	190	155	194	190	200	199	224	253	225	219	202	203	197	188	190	179	204	199
% Law Var.	7%	-3%	-6%	8%	10%	4%	4%	9%	-3%	14%	30%	4%	-4%	-2%	15%	-4%	-5%	1%	9%	-3%	11%	9%	3%	9%	8%	-5%	15%	-9%	13%	3%	10%	3%	27%	14%	9%	11%	-5%	15%	24%	7%	27%	14%	45%	30%



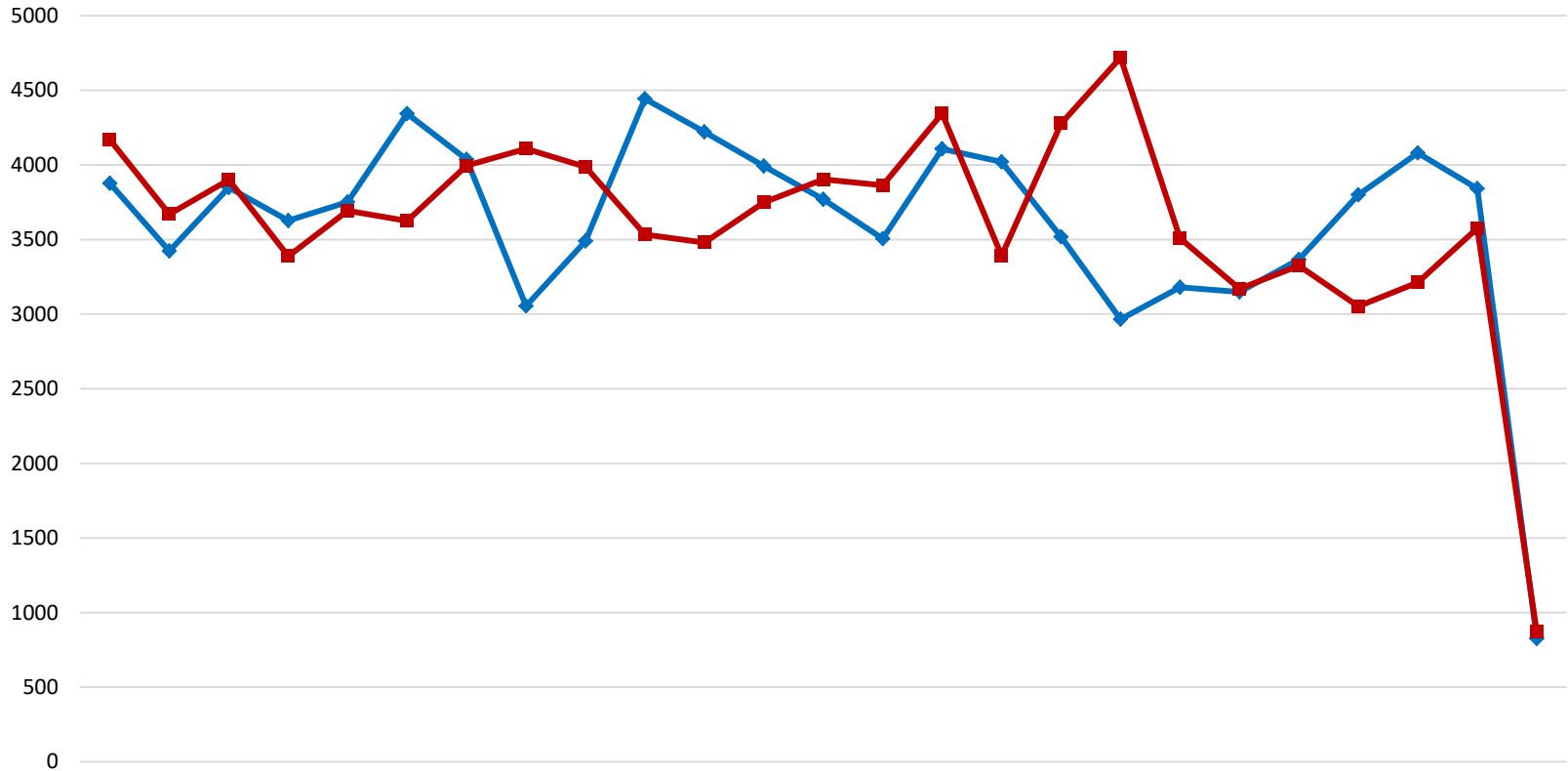
Safety Assessment Completion & Inactive Cases

Total Open Reports vs. % of Safety Assessments Completed



Data Sources: 1. for Total Open Reports and Safety Assessment Completion - DCS Tableau Dashboard, Overdue Reports, 11.9.2020
2. For Inactive Cases - Weekly DCS Inactives Report, 11.7.2020

Completed Reports vs. Assigned New Reports



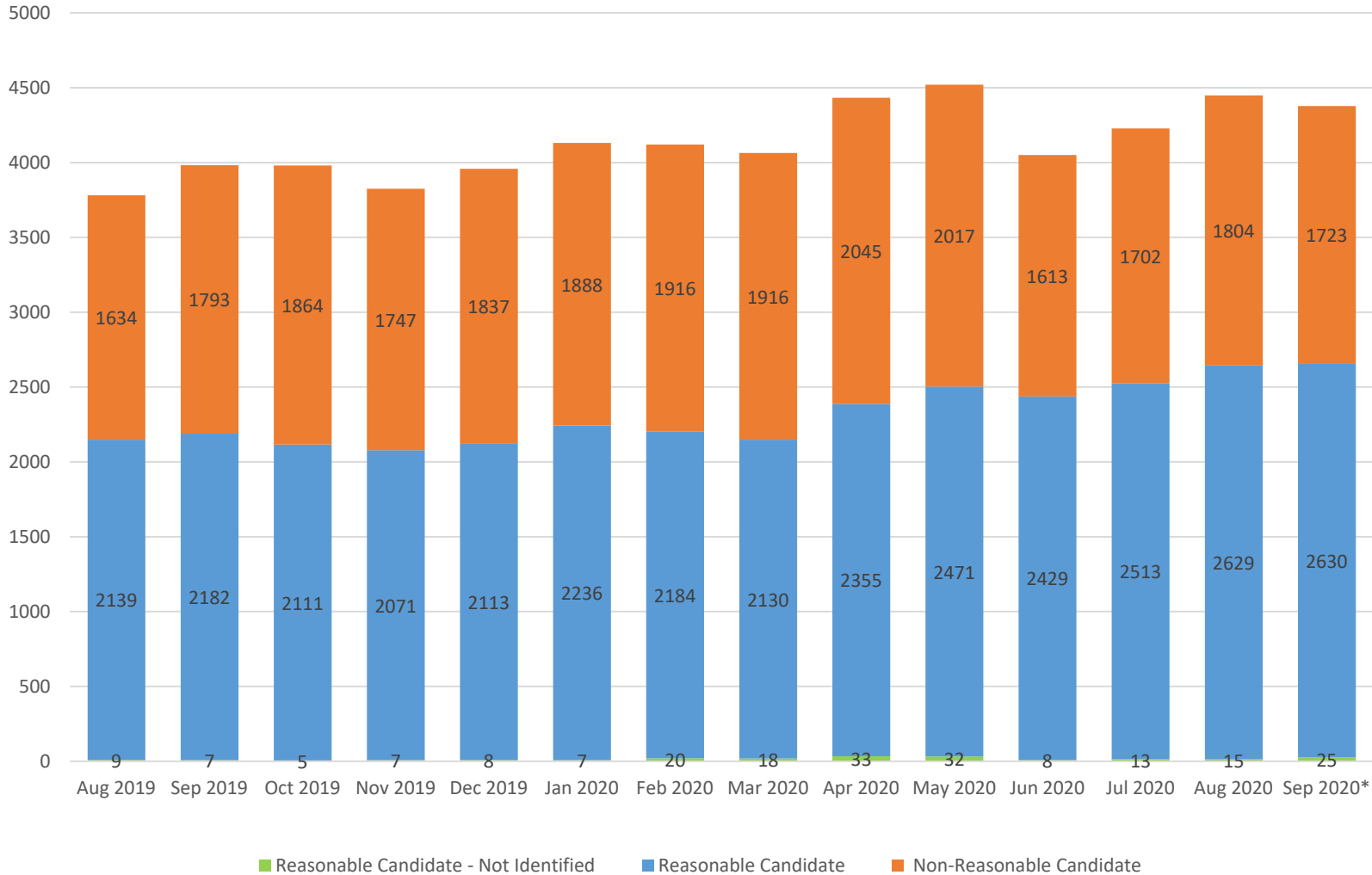
	Nov-18	Dec-18	Jan-19	Feb-19	Mar-19	Apr-19	May-19	Jun-19	Jul-19	Aug-19	Sep-19	Oct-19	Nov-19	Dec-19	Jan-20	Feb-20	Mar-20	Apr-20	May-20	Jun-20	Jul-20	Aug-20	Sep-20	Oct-20	Nov-20
—◆— New Reports	3877	3423	3849	3627	3751	4344	4037	3054	3490	4443	4221	3992	3769	3505	4107	4020	3518	2965	3180	3149	3366	3799	4080	3841	825
—■— Closed Reports	4169	3670	3900	3388	3693	3625	3995	4108	3987	3534	3479	3748	3903	3863	4345	3391	4277	4719	3509	3169	3324	3052	3212	3576	869



Data Source: Tableau – CPS Reports Open and Closed, 11.7.2020

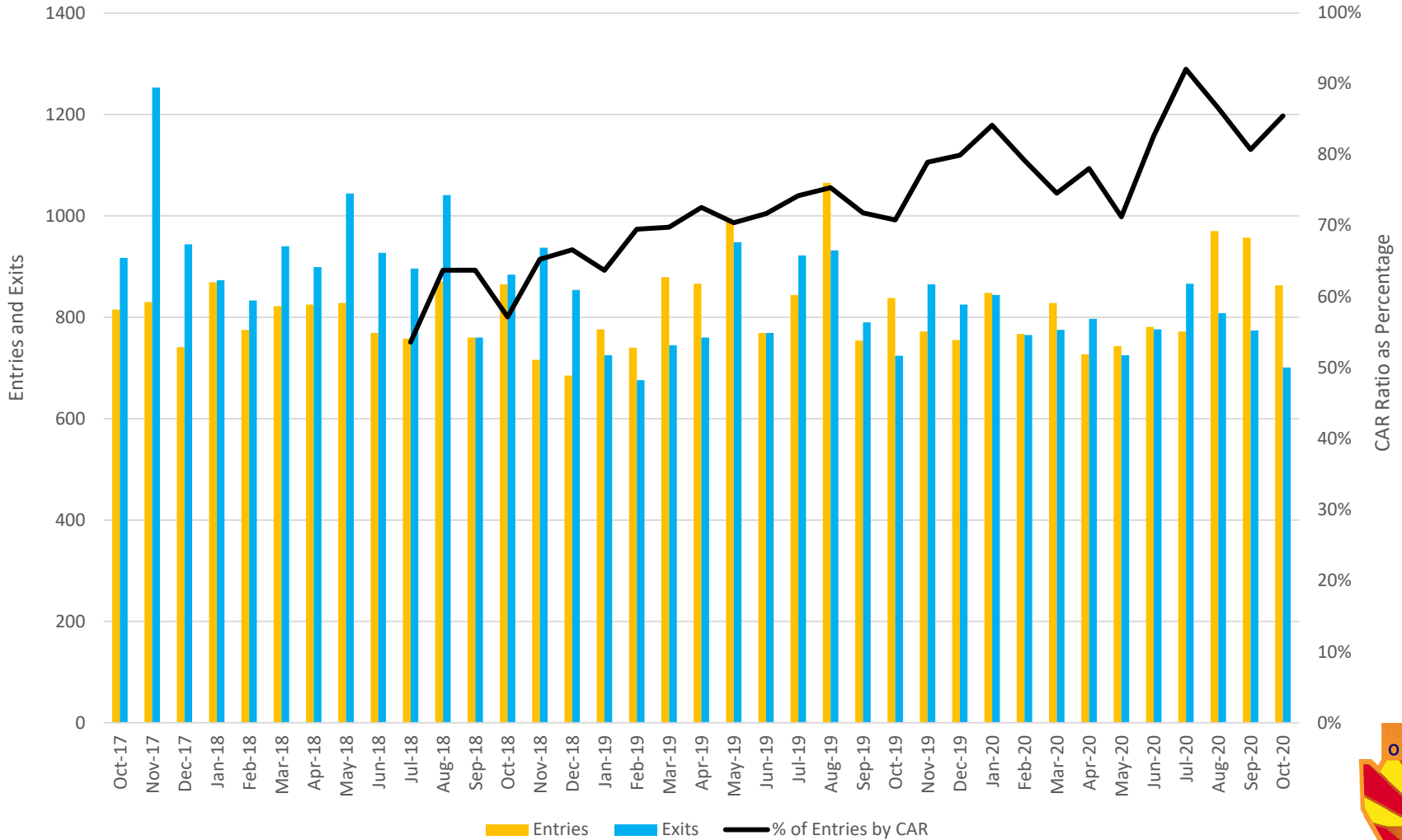
Children Receiving In Home Services

Children with Case Plan Goal – Remain with Family



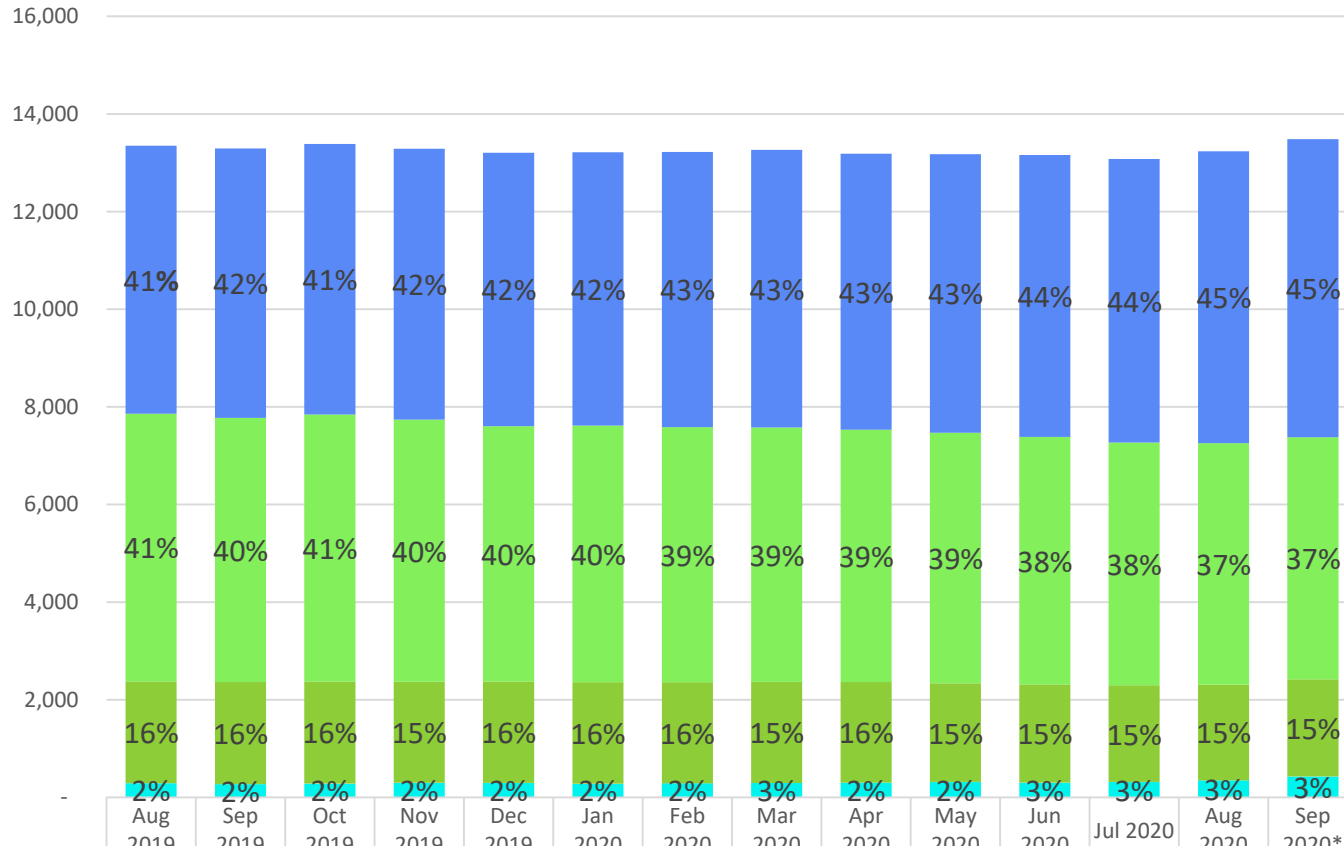
NOTE: September 2020 data is preliminary
 Data Source: DCS Monthly In-Home Care Report, 10.20.2020

Ratio of Approved CAR Petitions vs. Child Entries



NOTE: October 2020 data is preliminary
 Data Source: CAR data received from Juvenile Courts, 11.10.2020; Entries and Exits Dashboard, 11.9.2020

Children in Out-of-Home Care (0-17 years old)

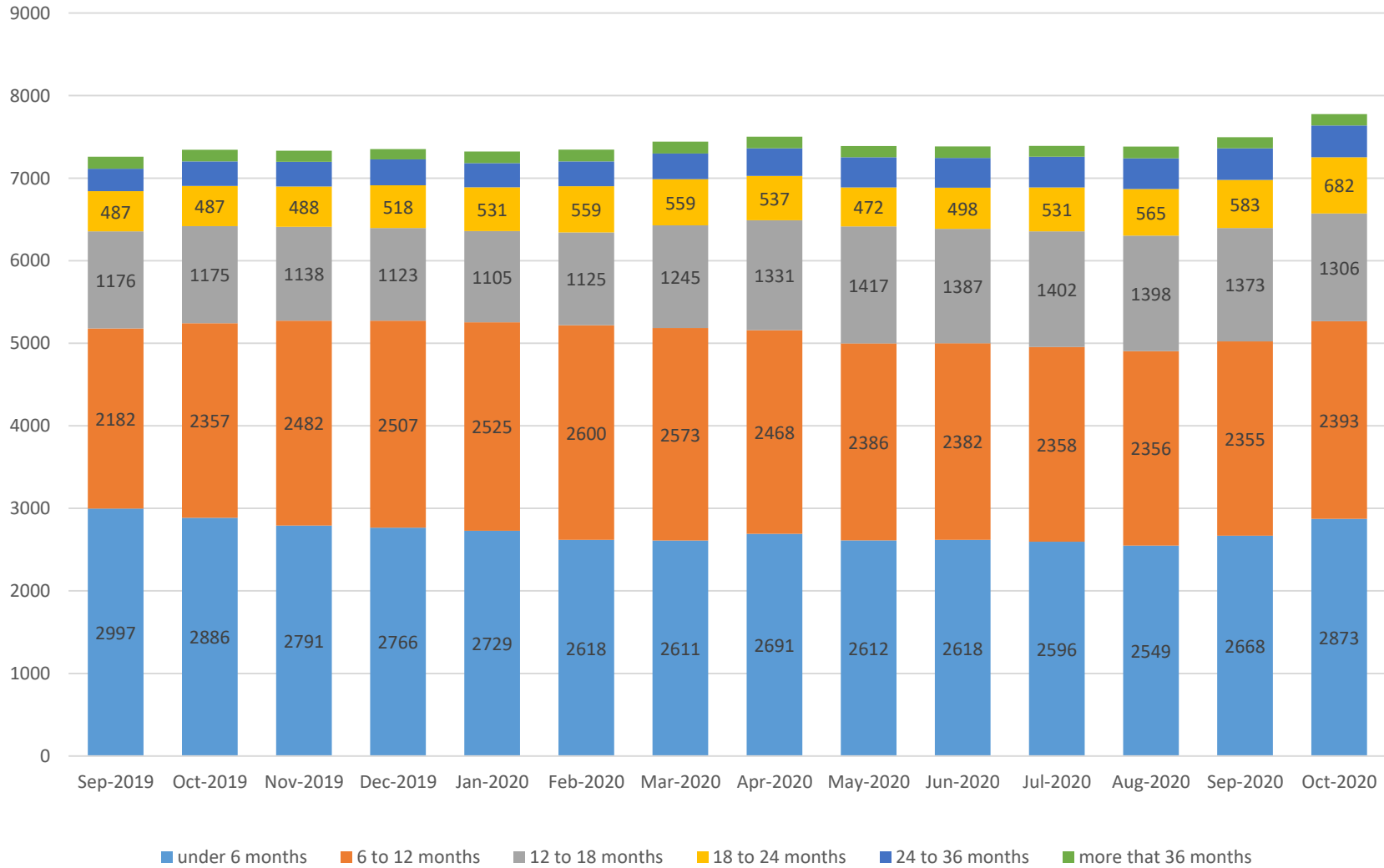


	Aug 2019	Sep 2019	Oct 2019	Nov 2019	Dec 2019	Jan 2020	Feb 2020	Mar 2020	Apr 2020	May 2020	Jun 2020	Jul 2020	Aug 2020	Sep 2020*
Unlicensed (Primarily Kinship)	5,489	5,517	5,542	5,546	5,602	5,595	5,639	5,688	5,654	5,706	5,775	5,809	5,979	6,108
Foster Care	5,484	5,412	5,468	5,371	5,230	5,258	5,224	5,211	5,168	5,133	5,072	4,972	4,944	4,958
Congregate Care	2,079	2,087	2,090	2,067	2,075	2,079	2,066	2,070	2,059	2,019	2,010	1,980	1,961	1,987
Independent Living	4	3	2	4	3	2	2	-	1	1	1	1	1	1
Other	293	274	283	298	297	280	291	296	304	316	303	316	350	431
Total in Out-of-Home Care	13,349	13,293	13,385	13,286	13,207	13,214	13,222	13,265	13,186	13,175	13,161	13,078	13,236	13,485



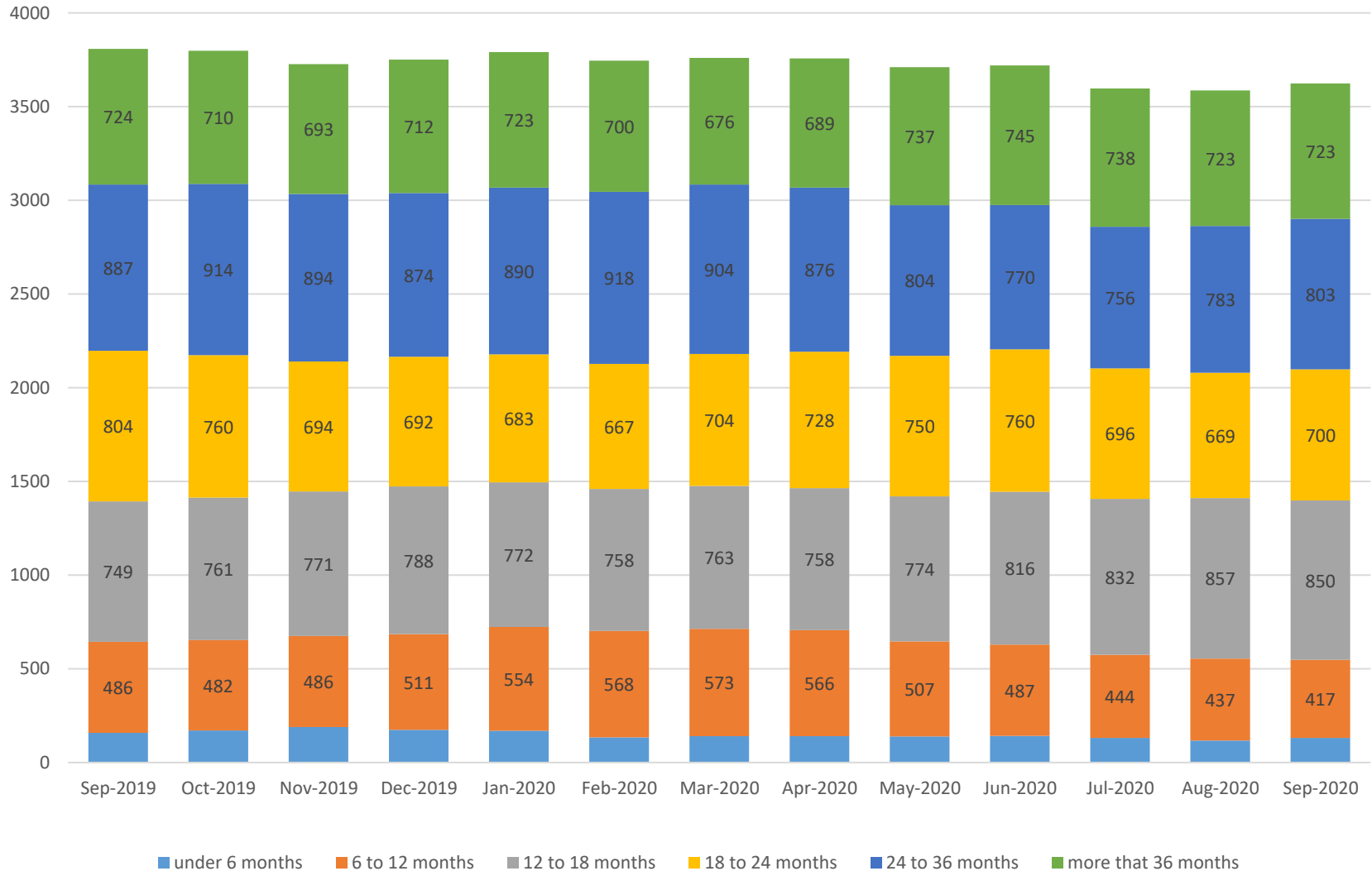
NOTE: September 2020 data is preliminary
Data Source: DCS Monthly Out-of-Home Care Report, 10.20.2020

Removed Children with Permanency Goal of Reunification by Length of Time in Care



NOTE: October 2020 data is preliminary
 Data Source: Einstein, 11.10.2020

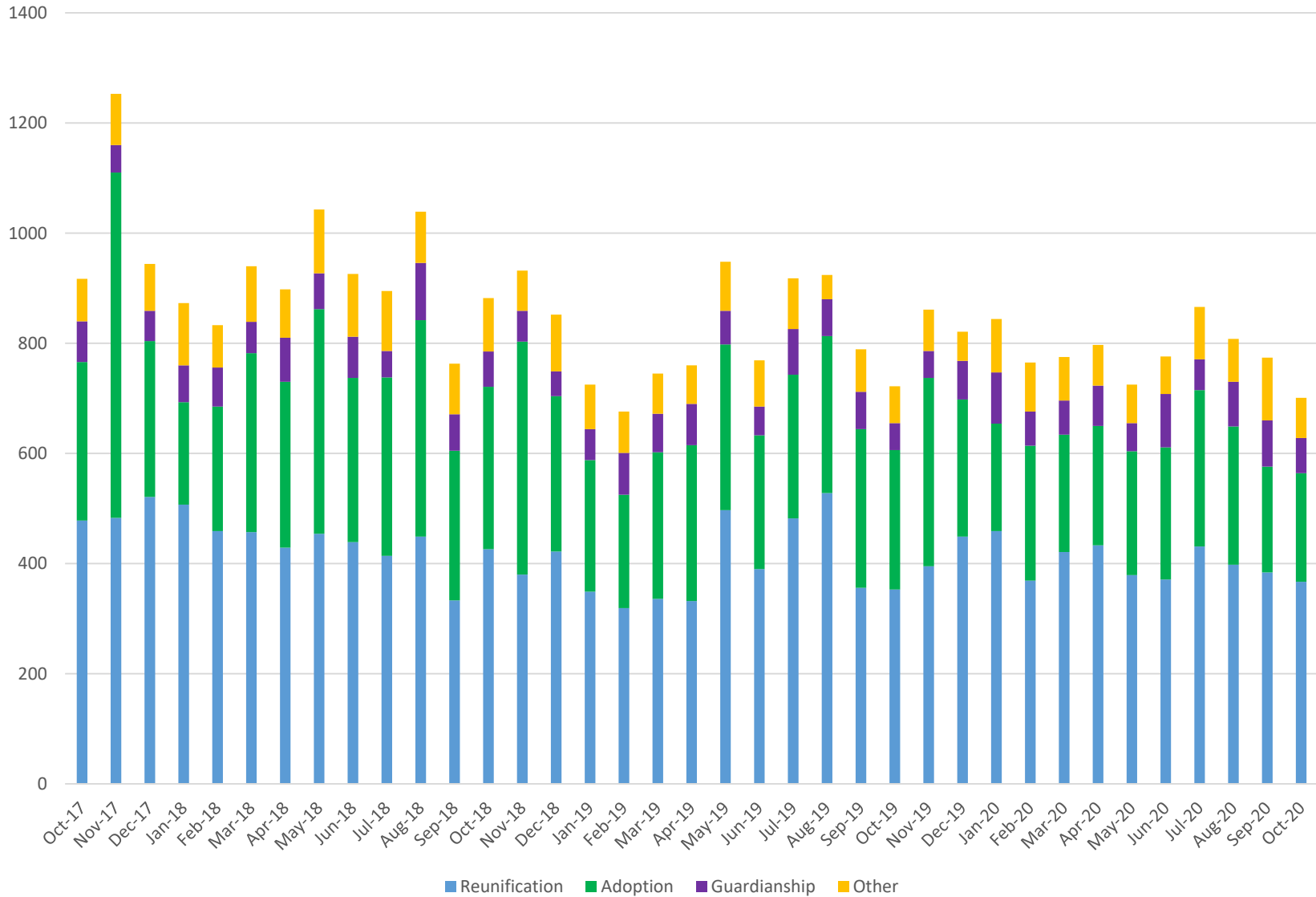
Removed Children with Permanency Goal of Adoption by Length of Time in Care



NOTE: October 2020 data is preliminary
 Data Source: Einstein, 11.10.2020



Exits by Type



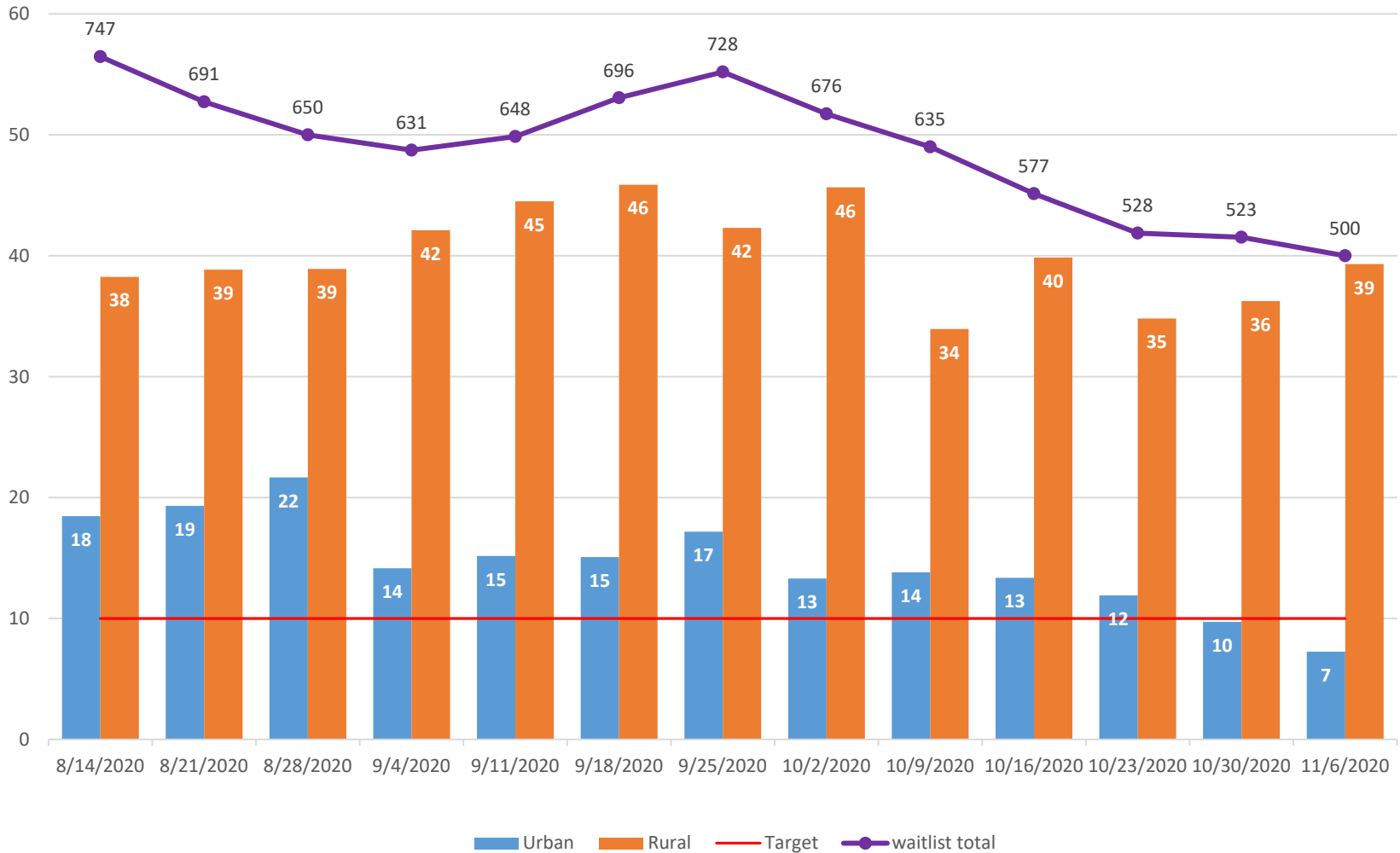
NOTE: October 2020 data is preliminary

Data Source: DCS Tableau Dashboard, Entries and Exits, 11.9.2020



Service Referral Waitlist

Average Age of all referrals on Waitlist by County Type



Data Source: Weekly DCS Waitlist Report

