

# YEAR THREE EVALUATION REPORT

Jane Dowling, PhD

Lyra Contreras, MPH

Wellington Consulting Group, Ltd.

# Annual Performance Measures

## # Directly Impacted

26,702 Youth

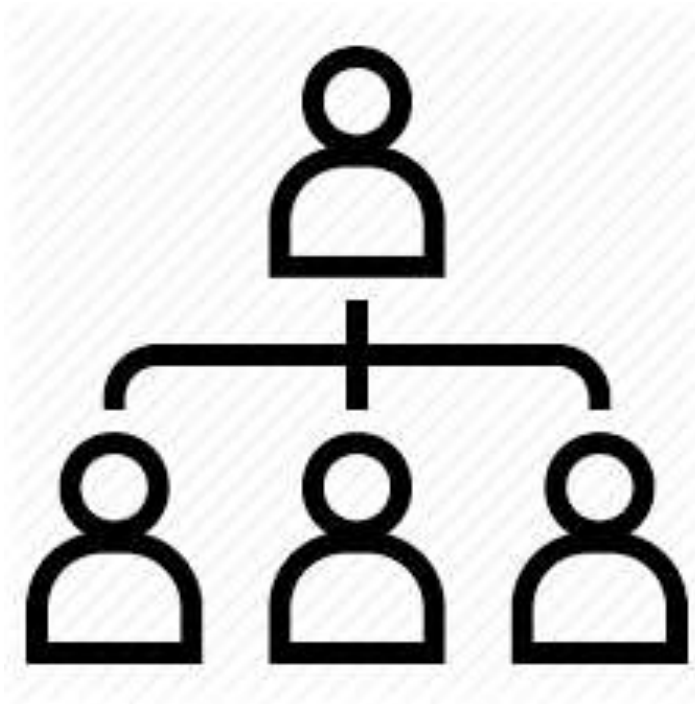
6,735 Adults

## # Indirectly Impacted

415,887 Youth

1,712,868 Adults

2,908,463 Unknown



## # of Materials Disseminated

491,248

## # of Events Conducted

1,464

# Evaluation Overview

Process evaluation designed to include an analysis and monitoring of each grantee's process of creating and implementing a Parenting Program.

Outcome evaluation designed to measure the overall effectiveness of each program in meeting its goals and objectives in the context of insights gained from the process evaluation as well as looking at the target outcomes across all the sites.

# Process Evaluation



Web-Based System



Monthly  
Process  
Report

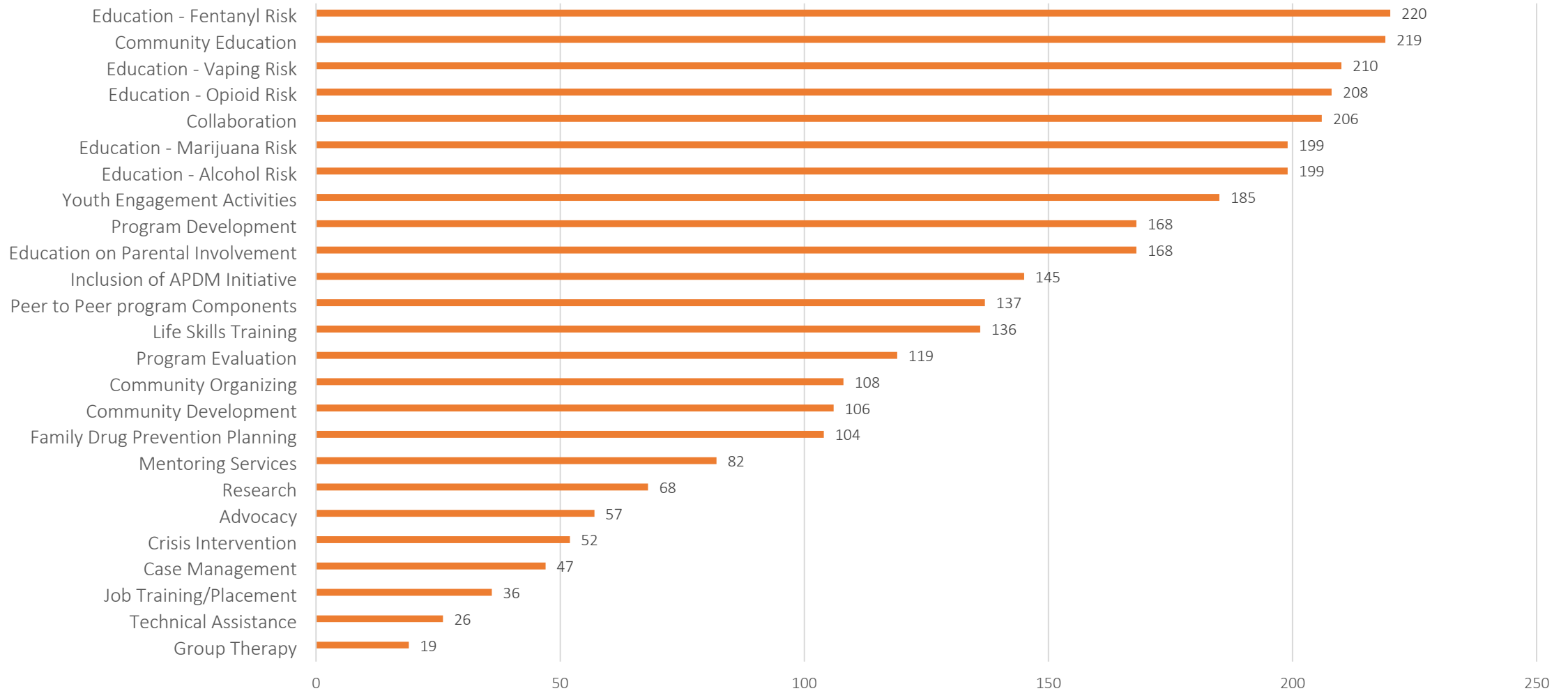
Number served  
Challenges/successes  
Plans to overcome challenges  
Family engagement activities



Standard Fidelity  
Survey

For evidence-based programs

## Types of Services & Activities Implemented: All Agencies Combined



<b>Influencing Factors</b>	<b># of Agencies</b>	<b># of Challenge Comments</b>	<b># of Success Comments</b>
<b>Participation</b>	19	23	32
<b>Recruitment</b>	19	19	50
<b>Scheduling</b>	17	26	16
<b>COVID</b>	14	48	1
<b>Program resources</b>	14	5	23
<b>Collaboration</b>	12	2	28
<b>Staffing</b>	12	24	16
<b>Change in platform</b>	7	10	9
<b>Programming issues</b>	7	10	2
<b>Retention</b>	7	2	16
<b>Adverse events</b>	5	4	3
<b>Professional development opportunities</b>	4	1	3
<b>General communication</b>	3	1	4
<b>Communication with family</b>	1	0	2
<b>Community events</b>	1	0	2

Risk Factors  
influencing  
Parenting  
Program

<b>Risk Factor</b>	<b>% of Total Agencies</b>
<b>Poor Parent/Youth Communication</b>	67%
<b>Family Conflict</b>	63%
<b>Poor Family Management</b>	52%
<b>Youth Attitudes Favorable to Drug Use</b>	48%
<b>Parent Attitudes Favorable to Drug Use</b>	44%
<b>Perceived Risk of Drug use</b>	44%
<b>Lack of Family Cohesion</b>	44%
<b>Knowledge of Risk/Harm of Youth Substance Use</b>	41%
<b>Lack of Family Attachment / Involvement</b>	33%
<b>Family Stress</b>	22%
<b>Knowledge of Trauma and Substance Abuse</b>	11%

The background features several sets of concentric, curved lines in shades of gray, some solid and some dashed, creating a sense of motion or a circular path. A blue rectangular box with a white border and a small white triangle pointing downwards at the bottom center is positioned on the left side of the slide.

## Process Cross Site: Area Served

- 12 Arizona counties
- 31% Maricopa County
- 28% Pima County



Chicanos Por La Causa

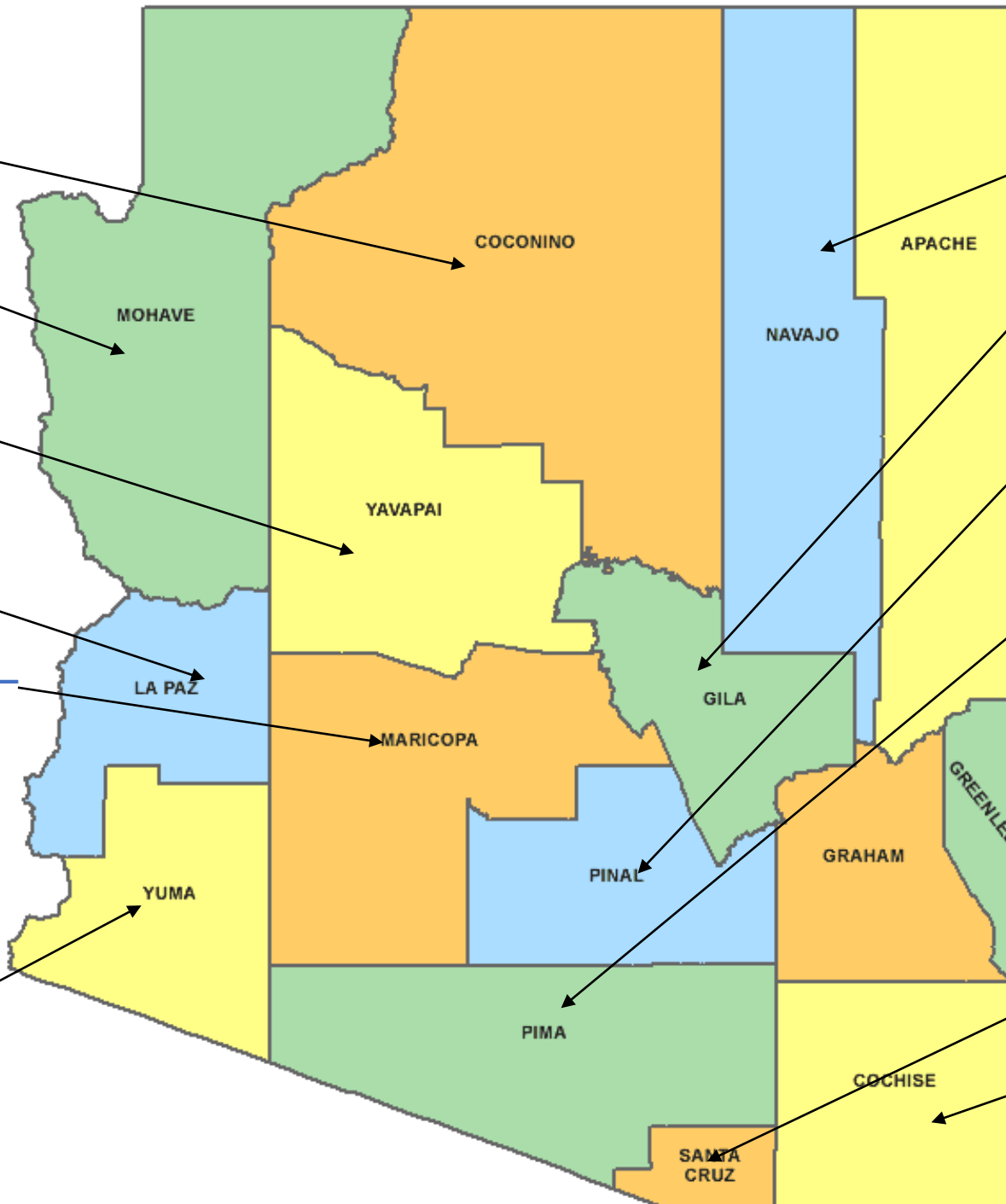
Arizona Youth Partnership  
WestCare Foundation

Cottonwood-Oak Creek SD  
MATFORCE

PAACE

Fountain Hills  
Friendly House  
Homeward Bound  
notMYkid, Inc  
Phoenix Indian Center  
Queen Creek USD  
Southwest Behavioral & Health  
Terros, Inc.

Campeños Sin Fronteras  
Child & Family Resources



Joseph City USD

Miami Unified School Dist.

Child & Family Resources  
Casa Grande Alliance

Child and Family Resources  
PPEP

Pima Prevention Partnership  
Amistades, Inc.

Arizona Youth Partnership  
Pima County Health Dept.

Serenity First Counseling  
Southern AZ CAC

Constructing Circles of Peace  
Arizona Youth Partnership

## Process Cross Site: Diversity

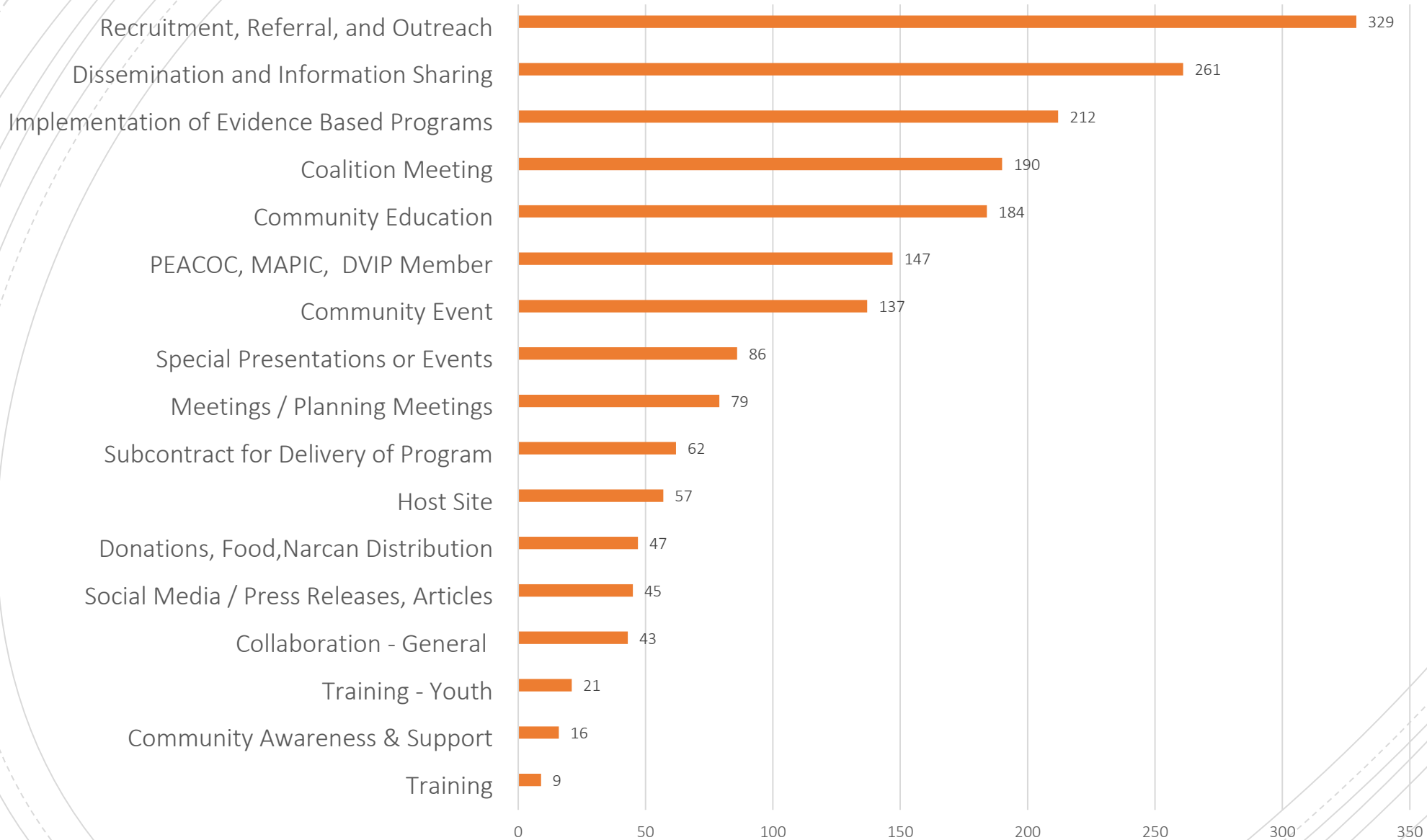
- 45% female, 36% male, 19% other
- 19% 0 – 12 years
- 54% 13 – 17 years
- 20% over 18 years old
- 6% age unknown
- 3% Black
- 4% Native American
- 2% Asian
- 46% White
- 1% Pac Is/Hawaiian
- 13% Other
- 5% More than one race
- 26% Unknown
- 27% Hispanic

The slide features a decorative background with several concentric, curved lines in shades of gray and blue. A prominent blue callout box with a white border and a downward-pointing tail is positioned on the left side. The text 'Other Cross Site Areas' is written in white, sans-serif font within this box. To the right of the callout box, there is a bulleted list of four items in black, sans-serif font.

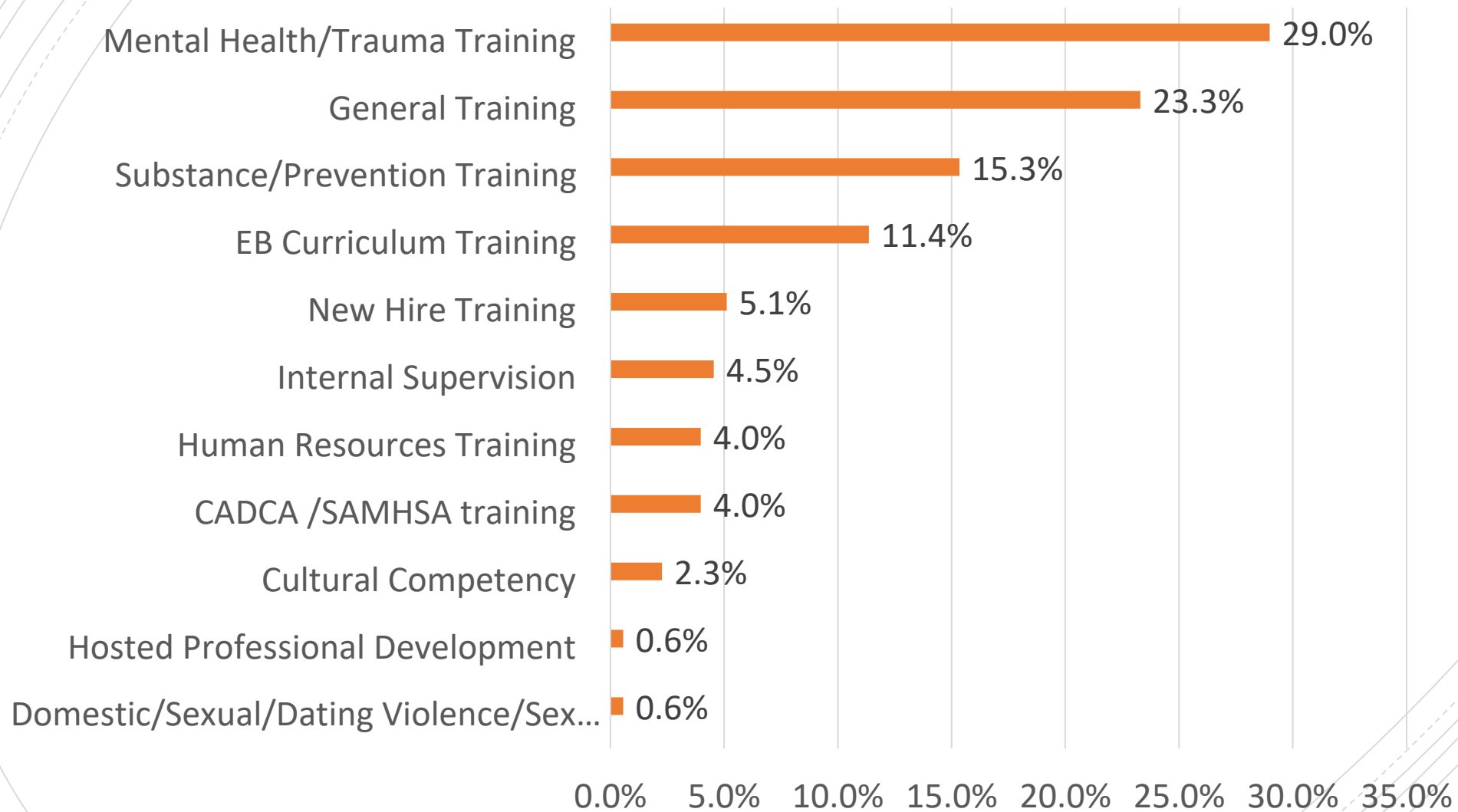
## Other Cross Site Areas

- Common outreach and recruitment
- Type of collaboration with agencies/entities
- Type of Trauma Informed Care approaches implemented
- Type of workforce development activities implemented

# Frequency of Collaborations by Type (N=26)



# Type of Workforce Development by Percentage of Trainings Conducted (N=23)



## Examples of Trauma Informed Care Approaches being Implemented

- The staff brought a guest speaker, who presented on the “Trauma Informed Care” to program parent participants. After the session, a parent expressed to staff how trauma affected them and the way they would react to certain things.
- We have a part of the program where we explain how trauma impacts our decisions and behaviors and then we spend 15 minutes at the end of sessions allowing participants to ask us questions about the impact of trauma and how to cope and move forward as they reunite with their families/children.
- Our Executive Director is a certified ACE's trainer and board member of the AZ ACE's consortium. Staff members are guided and supported by utilizing a reflective supervision model and have ongoing opportunities to learn and practice trauma-informed care.
- All staff involved with the implementation of this program are certified trauma support specialists through the Arizona Trauma Institute.
- The prevention team received a 2-day Trauma Informed Primary Prevention training.
- Our staff enter every session/encounter with the assumption that everyone experiences trauma, but most importantly, we make no assumptions about what we think will or will not be traumatic to a person.
- School-Based Counseling services are a Tier 3 program to reach students that need extra support including services related to trauma and crisis. We utilized EMPACT for mobile crisis units to meet with students in crisis and conducted Threat Assessments.
- Our team closely monitors the Zoom chat box and Facebook Live comments if we needed to refer for services related to trauma or that indicated a need for follow-up.

# Outcome Evaluation

Parent and Youth Surveys

Quarterly Reports

Annual Individual Reports

Annual Aggregate Report

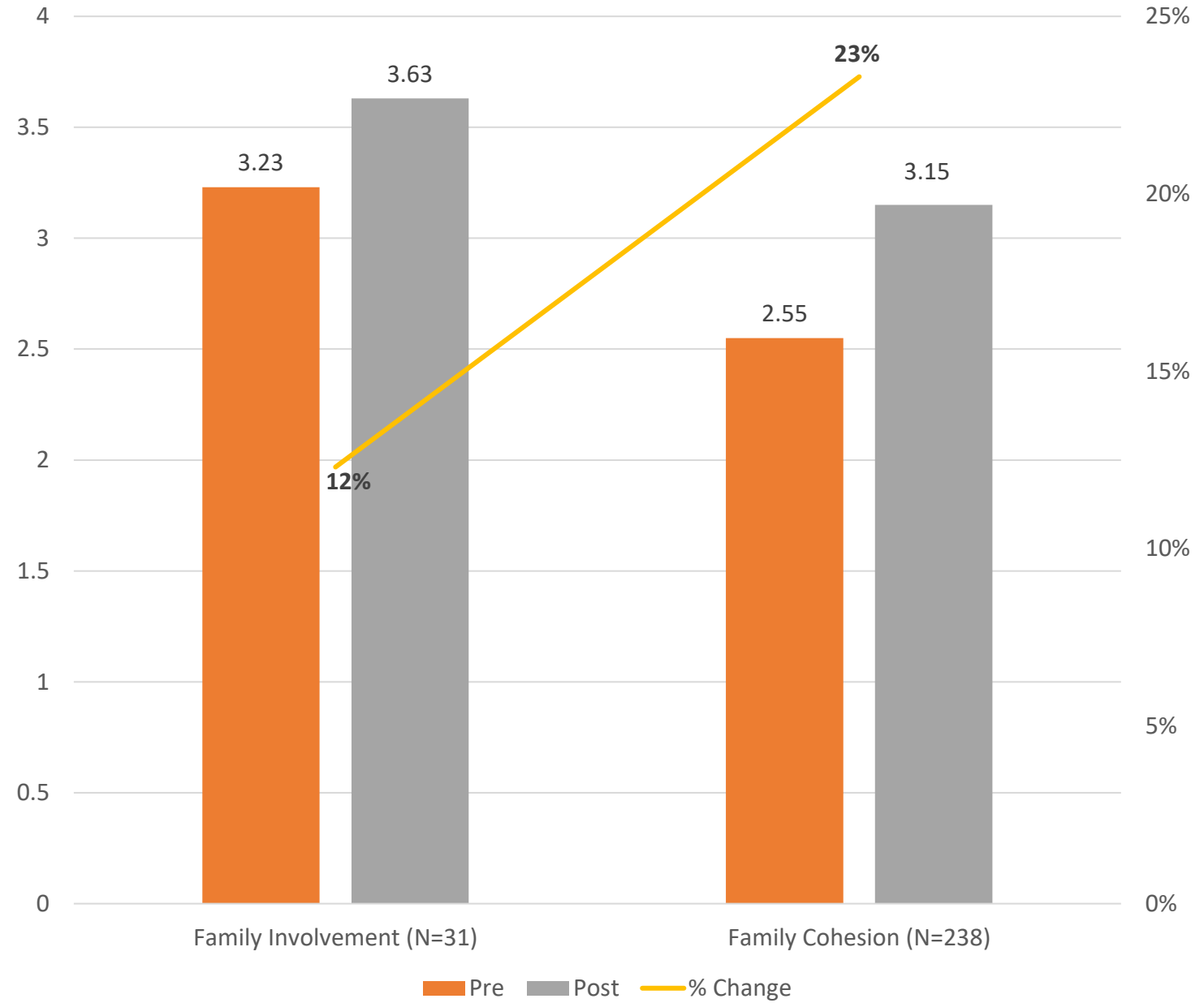
*What impact do the evidence-based Parent Programs have on family functioning, family management skills, family involvement, & family cohesion?*





# Youth Engagement Activities: Perception of Family Cohesion & Family Involvement

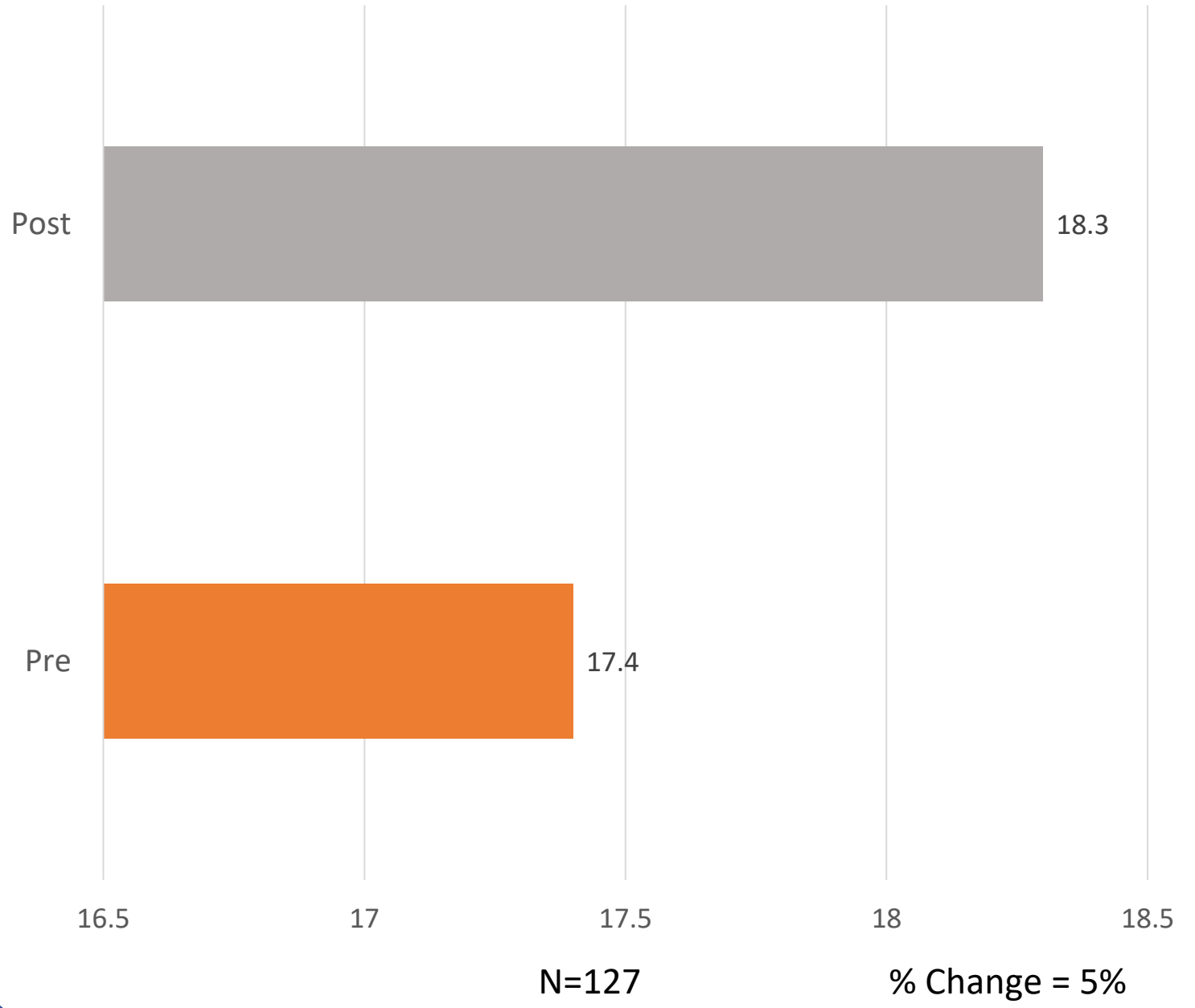
---



# Parent comments...

- The activities helped me with the relationship with my nephews. I really like the activity of praising. How a compliment can make such a big change in a person.
- This program helped my family to open up more about topics covered. Also to make efforts to bond more as a family.
- I am better able to understand where behavior comes from and the guide accordingly. I am encouraging my daughter to participate as well now that she is a mother.
- I learned so much about child development, more effective ways to respond and strategies to utilize to help my child reach their potential.
- My parenting has improved, less yelling from me! Much happier kids.
- These classes help one as a parent to analyze and see the areas in which we are failing and to understand that many times our children act in a certain way since one as a parent does not give them the guidance they need to make better decisions. Thank you for giving us the tools to learn to be better parents.
- I was a very dictatorial father with my children and I understood that he is not healthy and that I needed to change the way I speak to them and listen to him more.

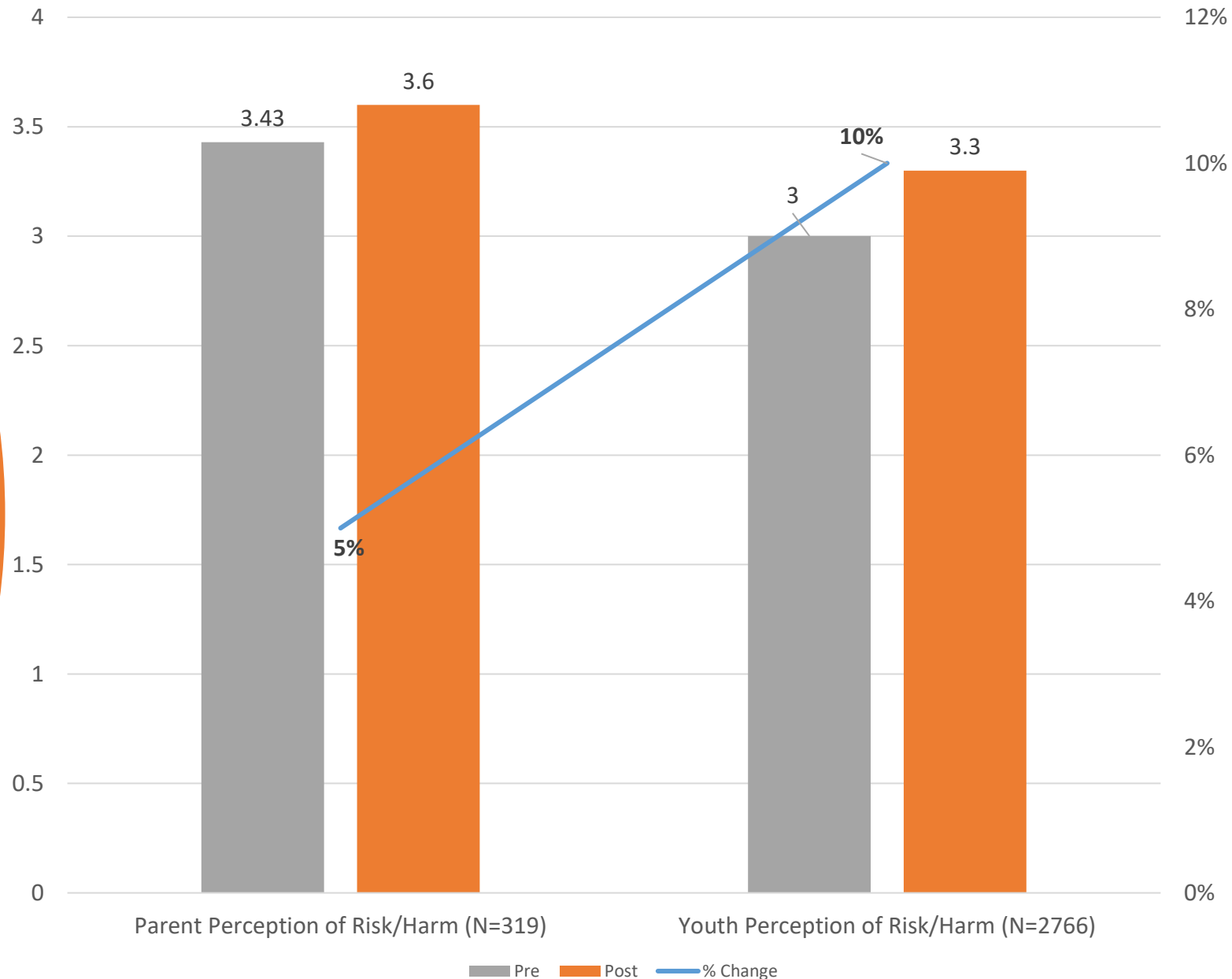
*What impact do the evidence-based programs have on parental stress?*



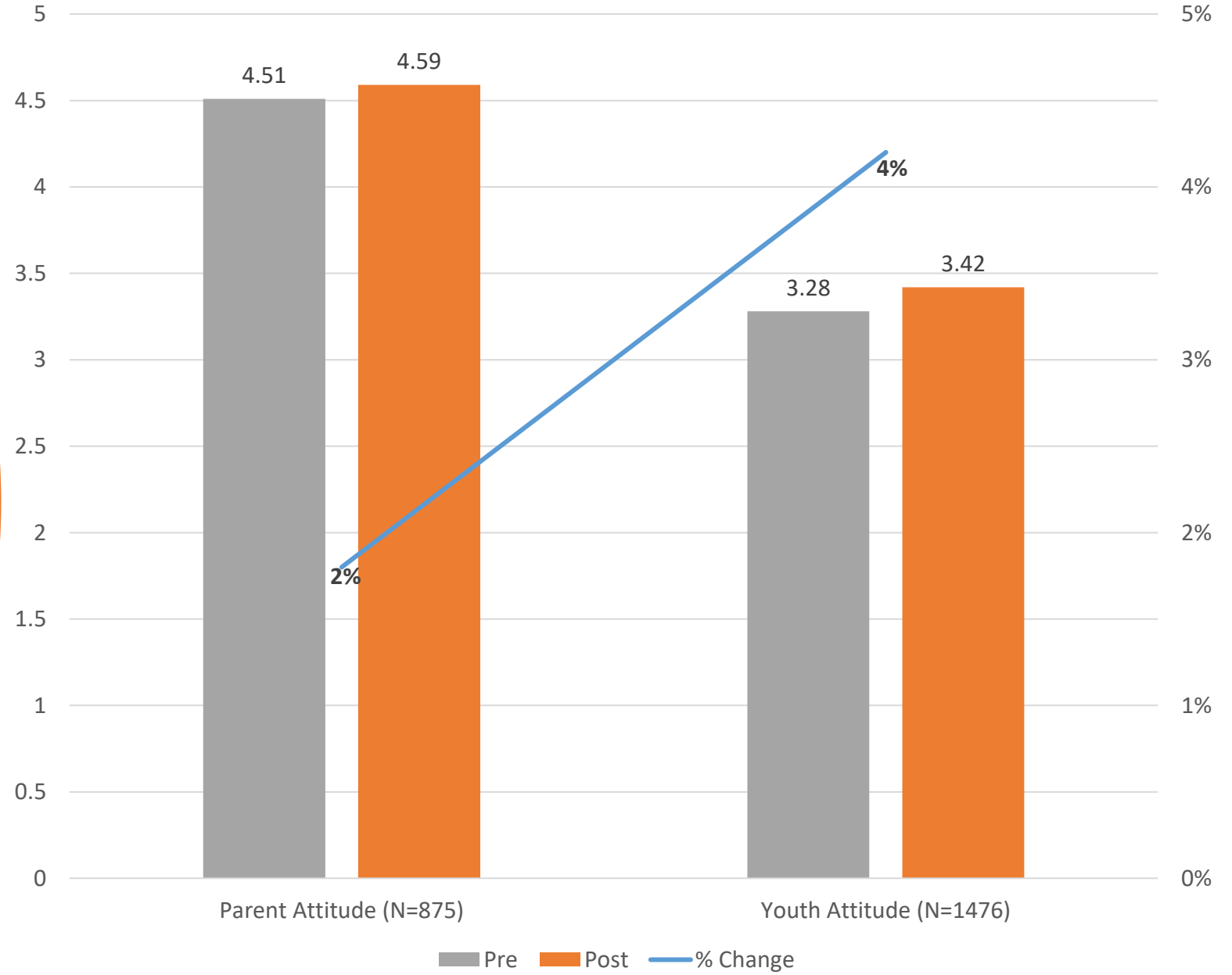
# Parent comments...

- Well, personally, it has helped me to manage stress with my children, dealing with it every day, practicing rules, communication and connection with them and bases that will serve me in the future with my children.
- All the classes were very good I would like them to give classes on stress
- I liked the part on ACEs, toxic stress, trauma, knowing I have been stuck in this toxic stress.
- I would like to go more in depth about the toxic stress and more interaction.
- Good overview of distinctions between toxic stress, trauma, and substance abuse. Statistics were eye-opening.
- I am grateful for being able to be in the program. It has helped me to stay a little calmer. I have learned many values as a family. I loved the attention chart of my 7-year-old daughter, but as she grows, the teaching that they taught me in the program will help me.
- It has been very helpful especially in these times of stress
- More communication with children and the issue of stress was very good

*What impact do the evidence-based programs have on parental/youth perception of the serious risk and health problems of alcohol and substance use?*



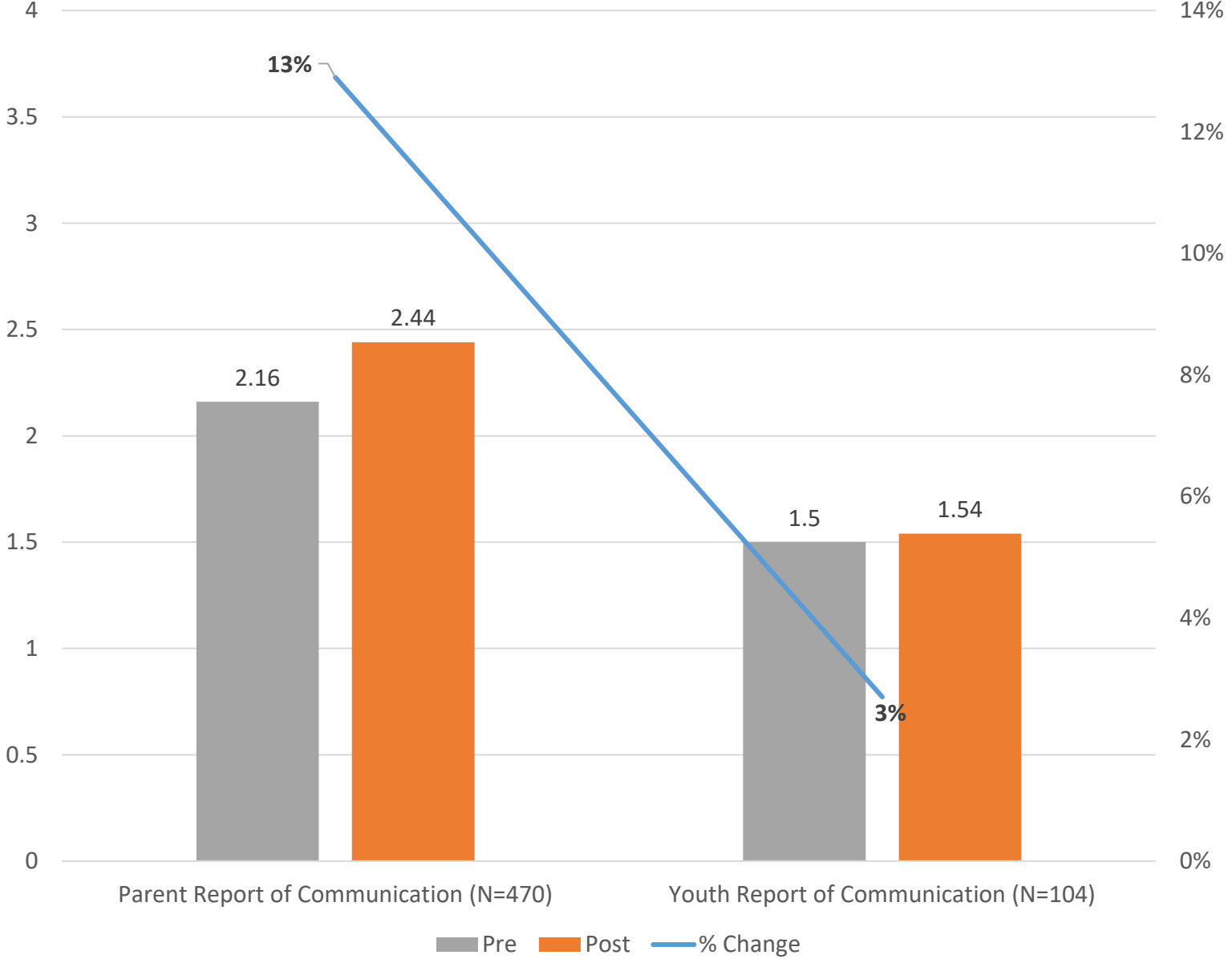
*What impact do the evidence-based programs have on parental/youth attitudes towards underage drinking, binge drinking, and illegal drug use?*



# Parent Comments on Risk/Harm & Attitudes...

- I liked how the program and facilitator helped me to realize the real dangers that are affecting children today and now that I am aware I can keep a better eye out for any warning signs.
- I learned that many medications that we have at home are highly dangerous.
- I was impacted by the issue of drugs and the outbreak in adolescents.
- It has made me see things differently. The way young people view drugs and alcohol is different from us adults.
- Learned more of different various forms of e-cigarettes. Research more.
- I am not a parent, but I really enjoyed the class and learned a ton from it. With this new information I am able to bring awareness to my siblings to help prevent any drug or alcohol abuse in the future.
- With this new knowledge, I can bring awareness in my own home to my family. It will help me notice things in my family, as well as help my family avoid these substances in the future.

*What impact do the evidence-based/ evidence informed programs have on parent child communication about alcohol and drug use?*





# Parent Comments on Parent-Child Communication...

- I have more confidence in being able to do better with my children I learned ways and to be patient and learned to improve my attitude towards them. Be more in communication with my children to solve problems that arise as a family. We have more confidence.
- It helps creating and strengthening family ties and loving interaction between family members. Helps to understand and develop the appropriate dynamics to find and establish communication.
- It helps me get clearer ideas on how to talk about drugs.
- It has helped me a lot with my children with communication and helping them solve problems.
- It helped me to set clear rules and routines for my children, to improve communication with them, to be more patient and tolerant.
- I have the time to spend with my children give them time each. Have more communication between family and get to know each other more. Know what you need from others.

## Summary of Outcome Results

	N	Target Outcome	
		Met	Not Met
Family functioning	9	44%	56%
Family management	7	29%	71%
Family involvement: Adult	10	30%	70%
Family involvement: Youth	3	33%	67%
Family conflict	7	14%	86%
Family cohesion: Adult	7	43%	57%
Family cohesion: Youth	5	71%	29%
Parental stress	8	50%	50%

## Summary of Outcome Results

	N	Target Outcome	
		Met	Not Met
Parental stress	8	50%	50%
Perception of risk/harm: Adult	14	43%	57%
Perception of risk/harm: Youth	23	65%	35%
Attitude toward youth substance use: Adult	13	8%	92%
Attitude toward youth substance use: Youth	15	53%	47%
Parent child-communication: Adult	4	25%	75%
Parent child-communication: Youth	21	76%	24%

# Program Satisfaction

<b>How would you rate the way the class was conducted?</b>	<b>Mean N=482</b>
<b>The opportunity to exchange ideas</b>	<b>4.70</b>
<b>The opportunity to ask questions during the class</b>	<b>4.76</b>
<b>The materials provided during the class</b>	<b>4.71</b>
<b>The knowledge and experience of the group leaders/facilitators</b>	<b>4.82</b>
<b>The skills of the group leaders/facilitators to conduct the class</b>	<b>4.86</b>
<b>Aggregate Average</b>	<b>4.77</b>

# Parent Comments: Support Needs

---

27% of parent comments were directed at the need stated by the parents to practice what they have learned in class.

---

13% requested specific topics – ideas for families/pro social activities, how to communicate, social media addiction, more examples for parents, more information on alcohol and drugs

---

8% made comments related to needing support external to class (i.e., support groups, spousal support, more resources in community for families, behavioral health, counseling, substance abuse support)

---

8% of the parents requested longer class times and/or additional classes and programs to support what they learned.

# Parent Comments: Suggestions

---

10% Suggestions regarding **more information around communication, parental stress, help with teens,** information on substance abuse, updated information on drugs, opioids, statistics, anger management

---

10% had suggestions regarding the **facilitator and** delivery of material: focus more on issues, interact more with participants, make it comfortable, put more enthusiasm in class, make sure everyone understands.

---

6% of suggestions were regarding the **videos/DVDs/Visuals:** Improve quality of videos and provide videos in Spanish, purchase/provide.

---

5% of suggestions were regarding need for **more time** in the classes.

---

5% of suggestions were related to **the platform used** (virtual vs in-person).

# How the Program Affected Parents

<b>How has this program affected you as a parent and how you are using it in your family?</b>	<b>% of 276 Comments</b>
<b>RISK / PROTECTIVE FACTORS:</b>	
<b>Parent-Child Communication</b>	29%
<b>Specific Parent Skills/Patience/Family Management</b>	12%
<b>Knowledge of/Prevention of Substance Use</b>	5%
<b>Family Bonding/Cohesion/Involvement</b>	4%
<b>Parental Stress</b>	2%
<b>Trauma/Resilience</b>	2%
<b>Family Conflict/Discipline</b>	1%
<b>Family Functioning</b>	<1%
<b>Youth Stress/Peer Support</b>	<1%

# How the Program Affected Parents

<b>How has this program affected you as a parent and how you are using it in your family?</b>	<b>% of 276 Comments</b>
<b>GENERAL COMMENT TOPICS:</b>	
<b>Comments indicating it was a “very good program”/learned many things</b>	18%
<b>Class characteristics</b>	8%
<b>Being a better parent/grandparent in general</b>	6%
<b>Need to practice what was learned</b>	5%
<b>More classes/more time/more information/more follow-up</b>	2%
<b>Working with Teens</b>	1%
<b>Knowing they are not alone/testimonies</b>	<1%
<b>Will share information with others</b>	<1%
<b>Have seen improvement</b>	<1%



# Recommendations

- Year 3, COVID continued to have an impact on recruitment, enrollment, scheduling, and the implementation of programs and community events. It is recommended that agencies ask the parents during recruitment what they prefer for the delivery of the program. It may be possible to even offer a hybrid approach where parents participate in both in-person and virtual classes.
- It is evident by reviewing the comments that most of the grantees are actively implementing TIC throughout their programs and their work with parents, youth, and community members. However, only eight agencies have any type of measure of the impact of their programs on mitigating the risk of trauma. It is recommended that more programs develop an objective to measure the impact of their TIC approaches in their programs.

# Recommendations Continued...

- Grantees also cited high dropout rate for parents who enroll in the program, but then don't attend the class. Grantees should use the quarterly check-in calls to discuss strategies to address recruitment and participation challenges.
- Parent comments continue to request more class time and longer classes and more classes. They also are requesting support external to the class (i.e., support groups, spousal supports, more resources in the community for families, behavioral health, counseling, and substance abuse support). These options should be considered by the grantees to reinforce the work done by the parents in the class. Parents commented that their youth are already using substances, so they need support beyond prevention.
- The Parents Commission funds programs that increase and enhance parental involvement and increase education about the serious risks and public health problems caused by the abuse of alcohol and controlled substances. There continues to be a reduction in the number of programs providing "parent" programs with their Parents Commission grants. More youth than adults are receiving direct services in the grantees' programs. In Year 2, 23,256 youth were served versus 18,161 adults. In Year 3, 26,702 youth were served versus 6,735 adults.
- It is recommended that grantees review the target risk and protective factors that are a priority for the Parents Commission funding and select evidence-based /evidence informed curricula and write outcome objectives that will target these factors.

# Thank you!

