



# Child Safety & Family Empowerment Council

September 9, 2021

**Thomas R. Winkel,**  
**MA, LPC, NCC**  
*Director*  
Arizona Coalition for  
Military Families



The Coalition is a public/private partnership and **collective impact initiative** that engages all helpers, organizations and communities to create a coordinated ecosystem of support. Established in 2009.

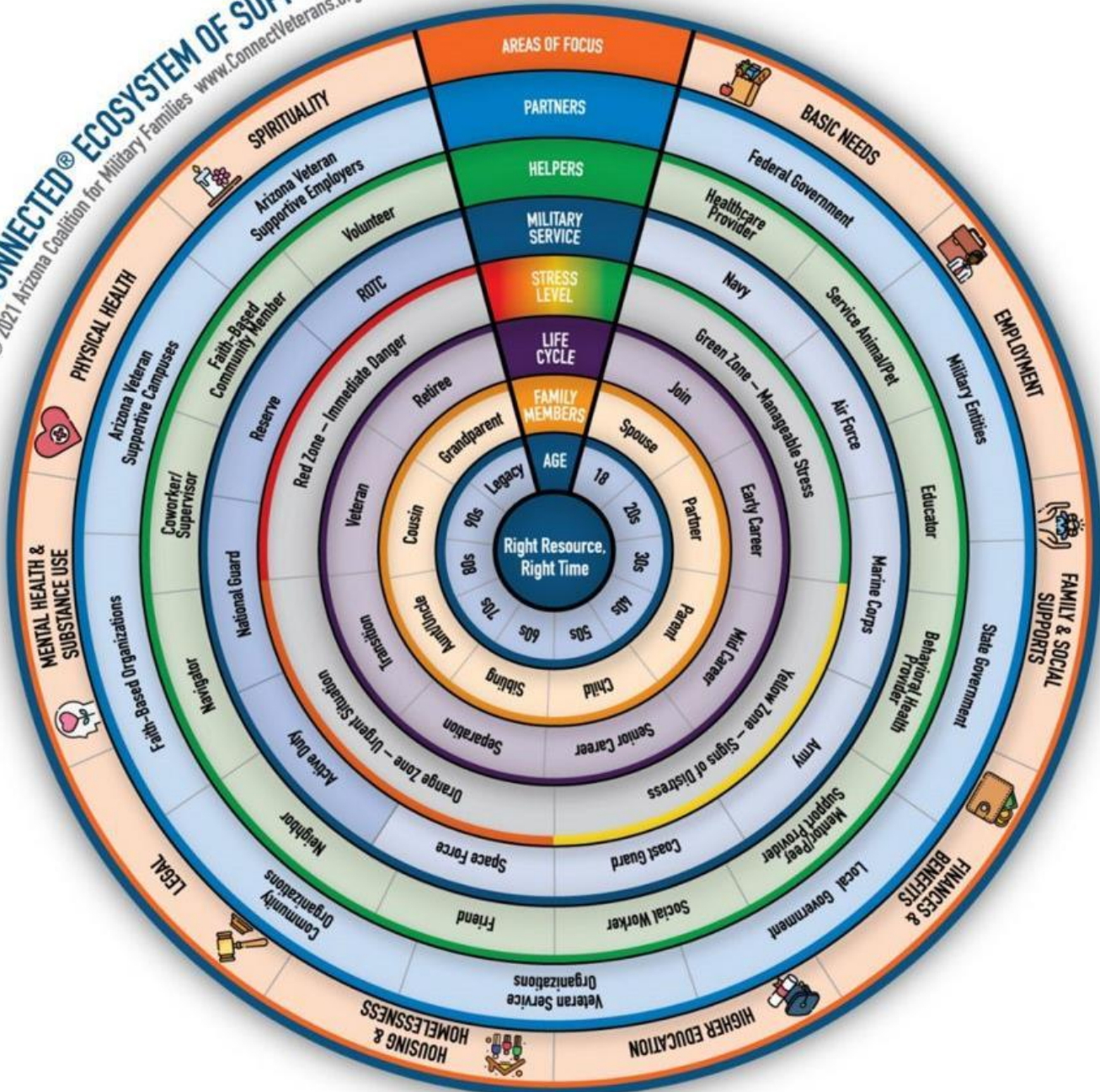


Be Connected is our statewide **upstream prevention program** to support Arizona's 500,000+ service members, veterans, and their families across all social determinants of health. Established in 2017.





**BE CONNECTED® ECOSYSTEM OF SUPPORT**  
 © 2021 Arizona Coalition for Military Families www.ConnectVeterans.org



**beconnected**  
 CONNECT EVERY VETERAN

[www.ConnectVeterans.org](http://www.ConnectVeterans.org)

866-4AZ-VETS (429-8387)

# A PUBLIC HEALTH APPROACH

We can't use the **SAME** approach for every service member, veteran and family member.

We need crisis response, treatment AND proactive prevention



## ARIZONA'S UPSTREAM PREVENTION MODEL

**UNIVERSAL | SELECTIVE | INDICATED**



# UNIVERSAL = Everyone





# SELECTIVE = Segments based on higher risk





# INDICATED = Individuals & their families



**How do we help families  
more effectively navigate  
systems to connect to  
resources and support?**





# Who (and what) is the focus?



**Service member/Veteran**



**Service member/Veteran**

**Family member**

**Self**

**All?**



# Think Broadly: Social Determinants of Health



**BASIC NEEDS**



**EMPLOYMENT**



**FAMILY & SOCIAL  
SUPPORTS**



**FINANCES &  
BENEFITS**



**HIGHER  
EDUCATION**



**HOUSING &  
HOMELESSNESS**



**LEGAL**



**MENTAL HEALTH &  
SUBSTANCE USE**



**PHYSICAL  
HEALTH**



**SPIRITUALITY**



# The entry point for engagement may not be mental health:

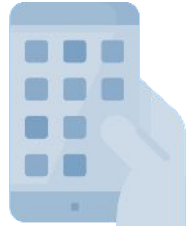
**Example from a recent project focused on the impact of COVID-19 and essential needs. Of the military and veteran households served:**

- **71%** experienced difficulty meeting basic needs (e.g. food, utility bills, gas, healthcare)
- **38%** of nominees and/or family members had experienced illness
- **40%** had experienced a reduction in hours or income
- **60%** experienced more than one negative impact from the pandemic.

# What is available in your state/community to connect people to resources and support?



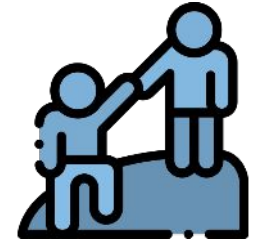
**Phone lines**



**Apps/Websites**



**Programs**



**Helpers**

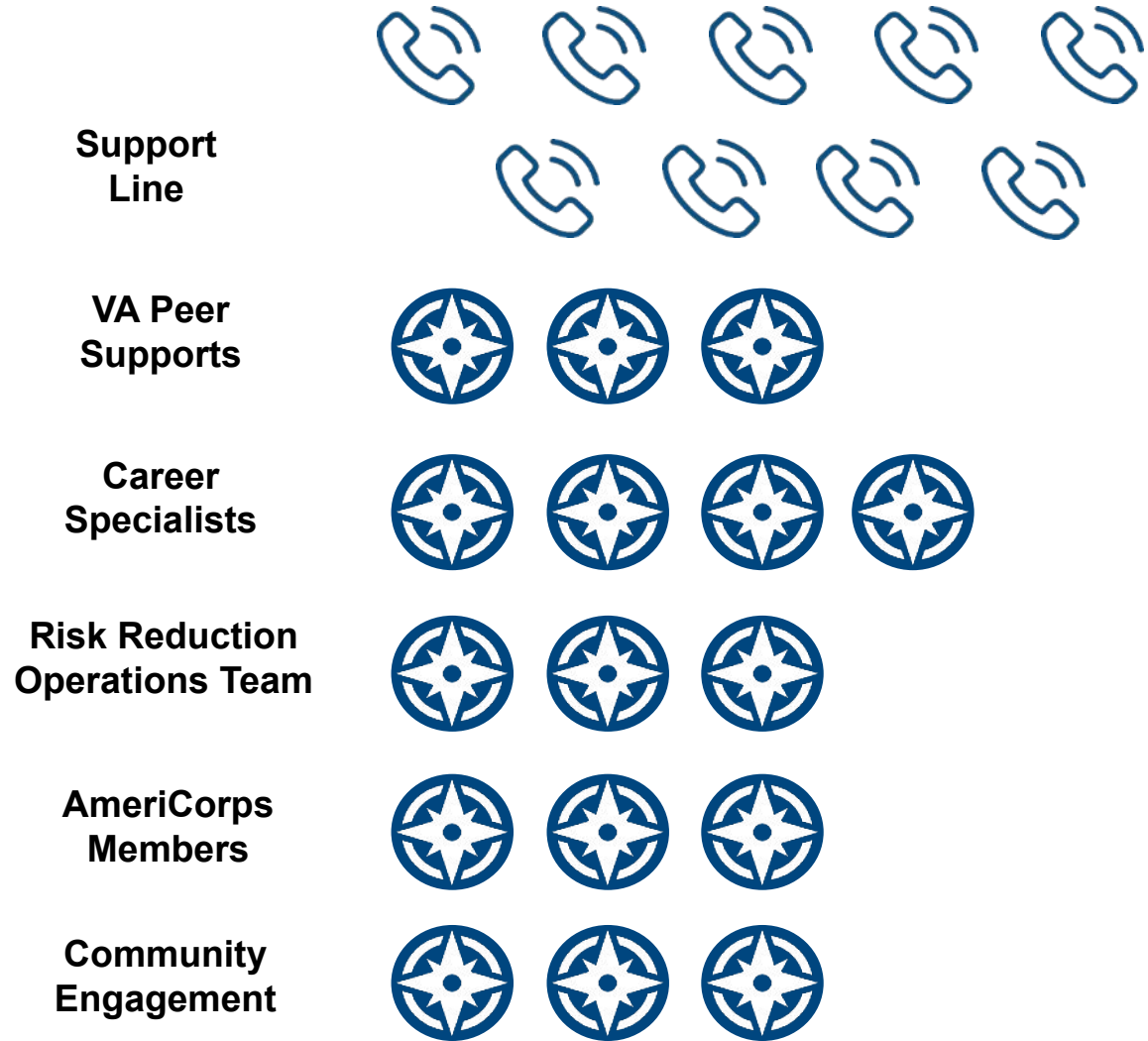


**How can the process of getting help be simplified?**





# Be Connected Team of Teams



**400+ Be Connected Partner Organizations and 3,000+ resources mapped and matchable**

# Points to keep in mind



**Consider the resource and support needs of everyone in the family.**

**Take an inclusive view of needs and social determinants of health.**

**Create clear pathways to help people and families  
navigate systems and resources.**





# Helping Military & Veteran Families Navigate Systems

September 9, 2021

Thomas R. Winkel, MA, LPC,  
NCC  
[thomas@arizonacoalition.org](mailto:thomas@arizonacoalition.org)